

Product datasheet for **TA341709**

STEAP1 Rabbit Polyclonal Antibody

Product data:

Product Type:	Primary Antibodies
Applications:	WB
Recommended Dilution:	WB
Reactivity:	Human
Host:	Rabbit
Isotype:	IgG
Clonality:	Polyclonal
Immunogen:	The immunogen for anti-STEAP1 antibody: synthetic peptide directed towards the N terminal of human STEAP1. Synthetic peptide located within the following region: FYKIPILVINKVLPMSITLLALVYLPGVIAAIVQLHNGTKYKKFPHWLD
Formulation:	Liquid. Purified antibody supplied in 1x PBS buffer with 0.09% (w/v) sodium azide and 2% sucrose. <i>Note that this product is shipped as lyophilized powder to China customers.</i>
Concentration:	lot specific
Conjugation:	Unconjugated
Storage:	Store at -20°C as received.
Stability:	Stable for 12 months from date of receipt.
Predicted Protein Size:	40 kDa
Gene Name:	six transmembrane epithelial antigen of the prostate 1
Database Link:	NP_036581 Entrez Gene 26872 Human Q9UHE8
Background:	This gene is predominantly expressed in prostate tissue, and is found to be upregulated in multiple cancer cell lines. The gene product is predicted to be a six-transmembrane protein, and was shown to be a cell surface antigen significantly expressed at cell-cell junctions. [provided by RefSeq, Jul 2008]
Synonyms:	PRSS24; STEAP

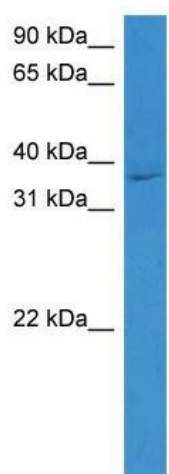


[View online »](#)

Note: Immunogen Sequence Homology: Pig: 100%; Human: 100%; Dog: 93%; Rat: 93%; Horse: 93%; Bovine: 93%; Rabbit: 93%; Guinea pig: 93%; Mouse: 86%

Protein Families: Transmembrane

Product images:



WB Suggested Anti-STEAP1 Antibody Titration:
0.2-1 ug/ml; ELISA Titer: 1:12500; Positive Control:
THP-1 cell lysate