

Product datasheet for **TA341708**

TRIM41 Rabbit Polyclonal Antibody

Product data:

Product Type:	Primary Antibodies
Applications:	WB
Recommended Dilution:	WB
Reactivity:	Human
Host:	Rabbit
Isotype:	IgG
Clonality:	Polyclonal
Immunogen:	The immunogen for anti-KL antibody: synthetic peptide directed towards the n terminal of human KL. Synthetic peptide located within the following region: FPDGFLWAVGSAAYQTEGGWQQHGKGIWDTFTHHPLAPPGDSRNASLP
Formulation:	Liquid. Purified antibody supplied in 1x PBS buffer with 0.09% (w/v) sodium azide and 2% sucrose. <i>Note that this product is shipped as lyophilized powder to China customers.</i>
Concentration:	lot specific
Conjugation:	Unconjugated
Storage:	Store at -20°C as received.
Stability:	Stable for 12 months from date of receipt.
Predicted Protein Size:	60 kDa
Gene Name:	tripartite motif containing 41
Database Link:	NP_291027 Entrez Gene 90933 Human Q8WW44
Background:	This gene encodes a type-I membrane protein that is related to beta-glucosidases. Reduced production of this protein has been observed in patients with chronic renal failure (CRF), and this may be one of the factors underlying the degenerative processes (e.g., arteriosclerosis, osteoporosis, and skin atrophy) seen in CRF. Also, mutations within this protein have been associated with ageing and bone loss. [provided by RefSeq, Jul 2008]
Synonyms:	RINCK

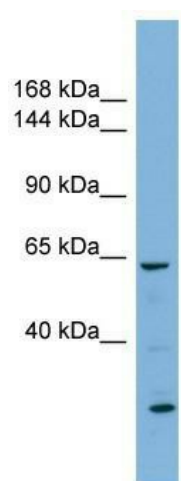


[View online »](#)

Note: Immunogen Sequence Homology: Human: 100%

Protein Families: Druggable Genome

Product images:



WB Suggested Anti-KL Antibody Titration: 0.2-1 ug/ml; ELISA Titer: 1:312500; Positive Control: Human Thymus