

## Product datasheet for **TA341705**

### AKAP7 Rabbit Polyclonal Antibody

#### Product data:

Product Type:	Primary Antibodies
Applications:	WB
Recommended Dilution:	WB
Reactivity:	Human
Host:	Rabbit
Isotype:	IgG
Clonality:	Polyclonal
Immunogen:	The immunogen for anti-AKAP7 antibody: synthetic peptide directed towards the middle region of human AKAP7. Synthetic peptide located within the following region: TLLVMQLLNEDEVNIGIDALLELKPFIEELLQGKHLTLPFQGIGTFGNQV
Formulation:	Liquid. Purified antibody supplied in 1x PBS buffer with 0.09% (w/v) sodium azide and 2% sucrose. <i>Note that this product is shipped as lyophilized powder to China customers.</i>
Concentration:	lot specific
Conjugation:	Unconjugated
Storage:	Store at -20°C as received.
Stability:	Stable for 12 months from date of receipt.
Predicted Protein Size:	37 kDa
Gene Name:	A-kinase anchoring protein 7
Database Link:	<a href="#">NP_057461</a> <a href="#">Entrez Gene 9465 Human</a> <a href="#">O43687</a>
Background:	This gene encodes a member of the A-kinase anchoring protein (AKAP) family, a group of functionally related proteins that bind to a regulatory subunit (RII) of cAMP-dependent protein kinase A (PKA) and target the enzyme to specific subcellular compartments. AKAPs have a common RII-binding domain, but contain different targeting motifs responsible for directing PKA to distinct intracellular locations. Three alternatively spliced transcript variants encoding different isoforms have been described. [provided by RefSeq, Apr 2011]



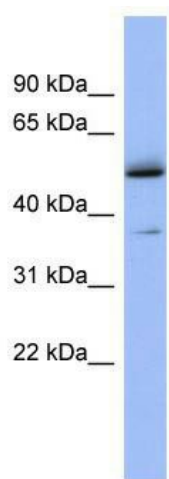
[View online »](#)

**Synonyms:** AKAP15; AKAP18

**Note:** Immunogen Sequence Homology: Pig: 100%; Human: 100%; Rat: 93%; Mouse: 93%; Rabbit: 93%; Guinea pig: 93%; Dog: 86%; Bovine: 86%

**Protein Families:** Druggable Genome

**Product images:**



WB Suggested Anti-AKAP7 Antibody Titration: 0.2-1 ug/ml; ELISA Titer: 1:312500; Positive Control: Human Small Intestine