

Product datasheet for **TA341704**

Annexin A10 (ANXA10) Rabbit Polyclonal Antibody

Product data:

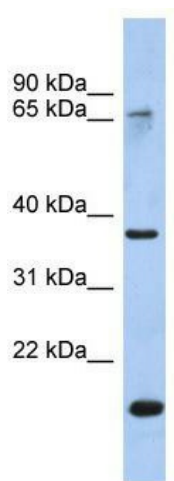
Product Type:	Primary Antibodies
Applications:	WB
Recommended Dilution:	WB
Reactivity:	Human
Host:	Rabbit
Isotype:	IgG
Clonality:	Polyclonal
Immunogen:	The immunogen for anti-ANXA10 antibody: synthetic peptide directed towards the middle region of human ANXA10. Synthetic peptide located within the following region: VLWEACQKQTGEHKTMLQMLCNKSYQQRLRVFQEFQNISGQDMVD AINE
Formulation:	Liquid. Purified antibody supplied in 1x PBS buffer with 0.09% (w/v) sodium azide and 2% sucrose. <i>Note that this product is shipped as lyophilized powder to China customers.</i>
Concentration:	lot specific
Conjugation:	Unconjugated
Storage:	Store at -20°C as received.
Stability:	Stable for 12 months from date of receipt.
Predicted Protein Size:	37 kDa
Gene Name:	annexin A10
Database Link:	NP_009124 Entrez Gene 11199 Human Q9UJ72
Background:	This gene encodes a member ofThe annexin family. Members ofThis calcium-dependent phospholipid-binding protein family play a role inThe regulation of cellular growth and in signal transduction pathways.The function ofThis gene has not yet been determined. [provided by RefSeq, Jul 2008]
Synonyms:	ANX14



[View online »](#)

Note: Immunogen Sequence Homology: Human: 100%; Dog: 93%; Pig: 93%; Bovine: 93%; Rat: 86%; Horse: 86%; Mouse: 86%; Guinea pig: 86%

Product images:



WB Suggested Anti-ANXA10 Antibody Titration:
0.2-1 ug/ml; ELISA Titer: 1:312500; Positive
Control: ACHN cell lysate