

## Product datasheet for **TA341702**

### Annexin IV (ANXA4) Rabbit Polyclonal Antibody

#### Product data:

Product Type:	Primary Antibodies
Applications:	IHC, WB
Recommended Dilution:	WB, IHC
Reactivity:	Human, Rat
Host:	Rabbit
Isotype:	IgG
Clonality:	Polyclonal
Immunogen:	The immunogen for anti-ANXA4 antibody: synthetic peptide directed towards the N terminal of human ANXA4. Synthetic peptide located within the following region: GLGTDEDAIISVLAYRNNTAQRQEIRTAYKSTIGRDLIDDLKSELSGNFEQ
Formulation:	Liquid. Purified antibody supplied in 1x PBS buffer with 0.09% (w/v) sodium azide and 2% sucrose. <i>Note that this product is shipped as lyophilized powder to China customers.</i>
Concentration:	lot specific
Conjugation:	Unconjugated
Storage:	Store at -20°C as received.
Stability:	Stable for 12 months from date of receipt.
Predicted Protein Size:	35 kDa
Gene Name:	annexin A4
Database Link:	<a href="#">NP_001144</a> <a href="#">Entrez Gene 79124 Rat</a> <a href="#">Entrez Gene 307 Human</a> <a href="#">P09525</a>



[View online »](#)

**Background:**

Annexin IV (ANX4) belongs to the annexin family of calcium-dependent phospholipid binding proteins. Although their functions are still not clearly defined, several members of the annexin family have been implicated in membrane-related events along exocytotic and endocytotic pathways. ANX4 has 45 to 59% identity with other members of its family and shares a similar size and exon-intron organization. Isolated from human placenta, ANX4 encodes a protein that has possible interactions with ATP, and has in vitro anticoagulant activity and also inhibits phospholipase A2 activity. ANX4 is almost exclusively expressed in epithelial cells. [provided by RefSeq, Jul 2008]

**Synonyms:**

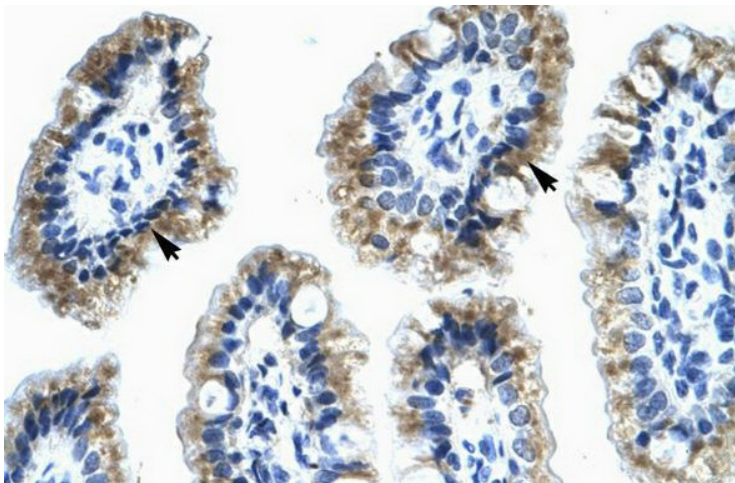
ANX4; HEL-S-274; PIG28; ZAP36

**Note:**

Immunogen Sequence Homology: Dog: 100%; Pig: 100%; Rat: 100%; Human: 100%; Rabbit: 100%; Horse: 93%; Mouse: 93%; Bovine: 93%; Guinea pig: 86%; Zebrafish: 79%

**Product images:**


WB Suggested Anti-ANXA4 Antibody Titration:  
1.25 ug/ml; ELISA Titer: 1:1562500; Positive  
Control: Human Placenta



Human Intestine