

## Product datasheet for **TA341693**

### MCM4 Rabbit Polyclonal Antibody

#### Product data:

|                         |   |
|-------------------------|---|
| Product Type:           | Primary Antibodies  |
| Applications:           | WB  |
| Recommended Dilution:   | WB  |
| Reactivity:             | Human   |
| Host:                   | Rabbit  |
| Isotype:                | IgG   |
| Clonality:              | Polyclonal  |
| Immunogen:              | The immunogen for anti-MCM4 antibody: synthetic peptide directed towards the N terminal of human MCM4. Synthetic peptide located within the following region:<br>SRVEGTPRSGVRGTPVRQRPDLGSAQKGLQVDLQSDGAAAEDIVASEQSL |
| Formulation:            | Liquid. Purified antibody supplied in 1x PBS buffer with 0.09% (w/v) sodium azide and 2% sucrose.<br><i>Note that this product is shipped as lyophilized powder to China customers.</i>                             |
| Concentration:          | lot specific  |
| Conjugation:            | Unconjugated  |
| Storage:                | Store at -20°C as received.   |
| Stability:              | Stable for 12 months from date of receipt.  |
| Predicted Protein Size: | 95 kDa  |
| Gene Name:              | minichromosome maintenance complex component 4  |
| Database Link:          | <a href="#">NP_877423</a><br><a href="#">Entrez Gene 4173 Human</a><br><a href="#">P33991</a>   |



[View online »](#)

**Background:**

The protein encoded by this gene is one of the highly conserved mini-chromosome maintenance proteins (MCM) that are essential for the initiation of eukaryotic genome replication. The hexameric protein complex formed by MCM proteins is a key component of the pre-replication complex (pre-RC) and may be involved in the formation of replication forks and in the recruitment of other DNA replication related proteins. The MCM complex consisting of this protein and MCM2, 6 and 7 proteins possesses DNA helicase activity, and may act as a DNA unwinding enzyme. The phosphorylation of this protein by CDC2 kinase reduces the DNA helicase activity and chromatin binding of the MCM complex. This gene is mapped to a region on the chromosome 8 head-to-head next to the PRKDC/DNA-PK, a DNA-activated protein kinase involved in the repair of DNA double-strand breaks. Alternatively spliced transcript variants encoding the same protein have been reported. [provided by RefSeq, Jul 2008]

**Synonyms:**

CDC21; CDC54; hCdc21; NKCD; NKGCD; P1-CDC21

**Note:**

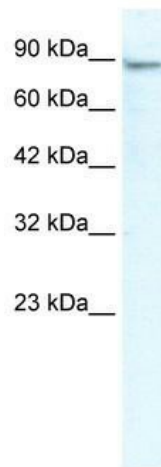
Immunogen Sequence Homology: Human: 100%; Pig: 93%; Rat: 93%; Horse: 93%; Mouse: 93%; Rabbit: 93%; Guinea pig: 93%; Dog: 92%; Bovine: 86%

**Protein Families:**

Stem cell - Pluripotency, Transcription Factors

**Protein Pathways:**

Cell cycle, DNA replication

**Product images:**

WB Suggested Anti-MCM4 Antibody Titration: 2.5 ug/ml; ELISA Titer: 1:62500; Positive Control: Jurkat cell lysate MCM4 is strongly supported by BioGPS gene expression data to be expressed in Human Jurkat cells