

Product datasheet for **TA341691**

MCM8 Rabbit Polyclonal Antibody

Product data:

Product Type:	Primary Antibodies
Applications:	WB
Recommended Dilution:	WB
Reactivity:	Human
Host:	Rabbit
Isotype:	IgG
Clonality:	Polyclonal
Immunogen:	The immunogen for anti-MCM8 antibody: synthetic peptide directed towards the N terminal of human MCM8. Synthetic peptide located within the following region: ELRDAPEKTLACMGLAIHQVLTKDLERHAAELQAQEGLSNDGETMVNVPH
Formulation:	Liquid. Purified antibody supplied in 1x PBS buffer with 0.09% (w/v) sodium azide and 2% sucrose. <i>Note that this product is shipped as lyophilized powder to China customers.</i>
Concentration:	lot specific
Conjugation:	Unconjugated
Storage:	Store at -20°C as received.
Stability:	Stable for 12 months from date of receipt.
Predicted Protein Size:	94 kDa
Gene Name:	minichromosome maintenance 8 homologous recombination repair factor
Database Link:	NP_115874 Entrez Gene 84515 Human Q9UJA3



[View online »](#)

Background:

The protein encoded by this gene is one of the highly conserved mini-chromosome maintenance proteins (MCM) that are essential for the initiation of eukaryotic genome replication. The hexameric protein complex formed by the mini-chromosome maintenance proteins is a key component of the pre-replication complex and may be involved in the formation of replication forks and in the recruitment of other DNA replication related proteins. This protein contains the central domain that is conserved among the mini-chromosome maintenance proteins. The encoded protein may interact with other mini-chromosome maintenance proteins and play a role in DNA replication. This gene may be associated with length of reproductive lifespan and menopause. Alternatively spliced transcript variants encoding distinct isoforms have been described. [provided by RefSeq, Jul 2013]

Synonyms:

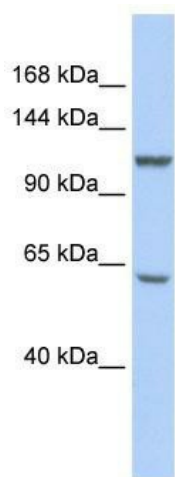
C20orf154; dj967N21.5; POF10

Note:

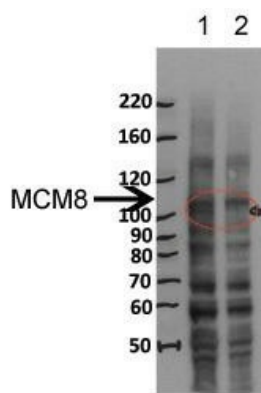
Immunogen Sequence Homology: Rat: 100%; Horse: 100%; Human: 100%; Mouse: 100%; Bovine: 100%; Dog: 93%; Pig: 93%; Guinea pig: 93%; Rabbit: 91%; Zebrafish: 85%

Protein Families:

Transcription Factors

Product images:

WB Suggested Anti-MCM8 Antibody Titration: 0.2-1 ug/ml; ELISA Titer: 1:62500; Positive Control: HepG2 cell lysate



Legend
1. siRNA Mock
2. siRNA MCM8

MCM8 WB Sample: siRNA Mock and siRNA MCM8
Dilution 1:1000