

## Product datasheet for **TA341690**

### MCM10 Rabbit Polyclonal Antibody

#### Product data:

Product Type:	Primary Antibodies
Applications:	WB
Recommended Dilution:	WB
Reactivity:	Human
Host:	Rabbit
Isotype:	IgG
Clonality:	Polyclonal
Immunogen:	The immunogen for anti-MCM10 antibody: synthetic peptide directed towards the middle region of human MCM10. Synthetic peptide located within the following region: PKLSALAEAKKLAAITKLRAKGQVLTKTNPNSIKKKQKDPQDILEVKERV
Formulation:	Liquid. Purified antibody supplied in 1x PBS buffer with 0.09% (w/v) sodium azide and 2% sucrose. <i>Note that this product is shipped as lyophilized powder to China customers.</i>
Concentration:	lot specific
Conjugation:	Unconjugated
Storage:	Store at -20°C as received.
Stability:	Stable for 12 months from date of receipt.
Predicted Protein Size:	98 kDa
Gene Name:	minichromosome maintenance 10 replication initiation factor
Database Link:	<a href="#">NP_060988</a> <a href="#">Entrez Gene 55388 Human</a> <a href="#">Q7L590</a>



[View online »](#)

**Background:**

The protein encoded by this gene is one of the highly conserved mini-chromosome maintenance proteins (MCM) that are involved in the initiation of eukaryotic genome replication. The hexameric protein complex formed by MCM proteins is a key component of the pre-replication complex (pre-RC) and it may be involved in the formation of replication forks and in the recruitment of other DNA replication related proteins. This protein can interact with MCM2 and MCM6, as well as with the origin recognition protein ORC2. It is regulated by proteolysis and phosphorylation in a cell cycle-dependent manner. Studies of a similar protein in *Xenopus* suggest that the chromatin binding of this protein at the onset of DNA replication is after pre-RC assembly and before origin unwinding. Alternatively spliced transcript variants encoding distinct isoforms have been identified. [provided by RefSeq, Jul 2008]

**Synonyms:**

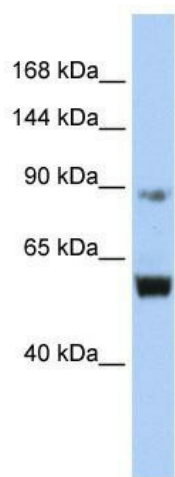
CNA43; DNA43; PRO2249

**Note:**

Immunogen Sequence Homology: Human: 100%; Horse: 93%; Dog: 86%; Rabbit: 86%; Pig: 77%; Bovine: 77%

**Protein Families:**

Stem cell - Pluripotency

**Product images:**

WB Suggested Anti-MCM10 Antibody Titration: 0.2-1 ug/ml; ELISA Titer: 1:1562500; Positive Control: Jurkat cell lysate MCM10 is supported by BioGPS gene expression data to be expressed in Jurkat