

Product datasheet for **TA341688**

MCM7 Rabbit Polyclonal Antibody

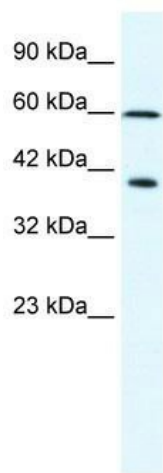
Product data:

Product Type:	Primary Antibodies
Applications:	WB
Recommended Dilution:	WB
Reactivity:	Human
Host:	Rabbit
Isotype:	IgG
Clonality:	Polyclonal
Immunogen:	The immunogen for anti-MCM7 antibody: synthetic peptide directed towards the N terminal of human MCM7. Synthetic peptide located within the following region: MALKDYALEKEKVKKFLQEFYQDDELGKKQFKYGNQLVRLAHREQUALYV
Formulation:	Liquid. Purified antibody supplied in 1x PBS buffer with 0.09% (w/v) sodium azide and 2% sucrose. <i>Note that this product is shipped as lyophilized powder to China customers.</i>
Concentration:	lot specific
Conjugation:	Unconjugated
Storage:	Store at -20°C as received.
Stability:	Stable for 12 months from date of receipt.
Predicted Protein Size:	42 kDa
Gene Name:	minichromosome maintenance complex component 7
Database Link:	NP_005907 Entrez Gene 4176 Human P33993



[View online »](#)

Background:	The protein encoded by this gene is one of the highly conserved mini-chromosome maintenance proteins (MCM) that are essential for the initiation of eukaryotic genome replication. The hexameric protein complex formed by the MCM proteins is a key component of the pre-replication complex (pre-RC) and may be involved in the formation of replication forks and in the recruitment of other DNA replication related proteins. The MCM complex consisting of this protein and MCM2, 4 and 6 proteins possesses DNA helicase activity, and may act as a DNA unwinding enzyme. Cyclin D1-dependent kinase, CDK4, is found to associate with this protein, and may regulate the binding of this protein with the tumor suppressor protein RB1/RB. Alternatively spliced transcript variants encoding distinct isoforms have been reported. [provided by RefSeq, Jul 2008]
Synonyms:	CDC47; MCM2; P1.1-MCM3; P1CDC47; P85MCM; PNAS146; PPP1R104
Note:	Immunogen Sequence Homology: Human: 100%; Dog: 93%; Pig: 93%; Rat: 93%; Bovine: 93%; Guinea pig: 93%; Rabbit: 86%; Horse: 79%; Mouse: 79%
Protein Families:	Transcription Factors
Protein Pathways:	Cell cycle, DNA replication

Product images:

WB Suggested Anti-MCM7 Antibody Titration: 2.5 ug/ml; ELISA Titer: 1:62500; Positive Control: Daudi cell lysate MCM7 is strongly supported by BioGPS gene expression data to be expressed in Human Daudi cells