

Product datasheet for **TA341687**

MCM7 Rabbit Polyclonal Antibody

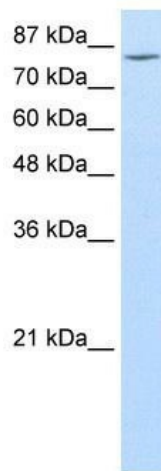
Product data:

| | |
|-------------------------|---|
| Product Type: | Primary Antibodies |
| Applications: | IHC, WB |
| Recommended Dilution: | WB, IHC |
| Reactivity: | Human |
| Host: | Rabbit |
| Isotype: | IgG |
| Clonality: | Polyclonal |
| Immunogen: | The immunogen for anti-MCM7 antibody: synthetic peptide directed towards the middle region of human MCM7. Synthetic peptide located within the following region: HRIVKMNKSEDDDESGAGELTREELRQIAEEDFYEKLAASIAPEIYGHEDV |
| Formulation: | Liquid. Purified antibody supplied in 1x PBS buffer with 0.09% (w/v) sodium azide and 2% sucrose. <i>Note that this product is shipped as lyophilized powder to China customers.</i> |
| Concentration: | lot specific |
| Conjugation: | Unconjugated |
| Storage: | Store at -20°C as received. |
| Stability: | Stable for 12 months from date of receipt. |
| Predicted Protein Size: | 81 kDa |
| Gene Name: | minichromosome maintenance complex component 7 |
| Database Link: | NP_005907 Entrez Gene 4176 Human P33993 |

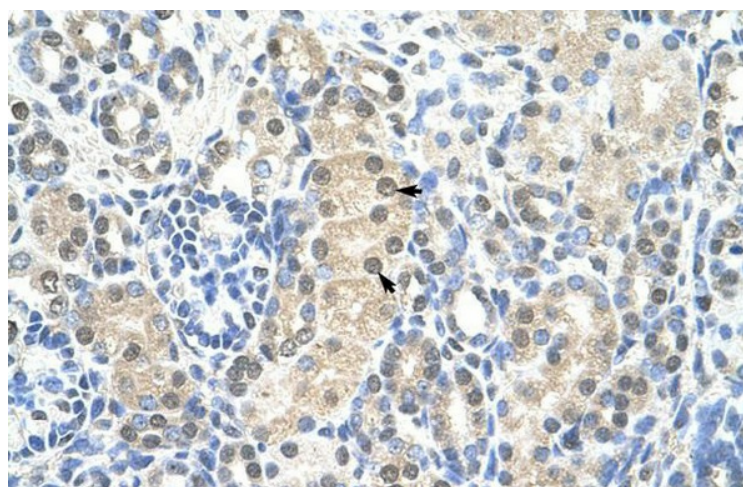


[View online »](#)

| | |
|--------------------------|--|
| Background: | The protein encoded by this gene is one of the highly conserved mini-chromosome maintenance proteins (MCM) that are essential for the initiation of eukaryotic genome replication. The hexameric protein complex formed by the MCM proteins is a key component of the pre-replication complex (pre-RC) and may be involved in the formation of replication forks and in the recruitment of other DNA replication related proteins. The MCM complex consisting of this protein and MCM2, 4 and 6 proteins possesses DNA helicase activity, and may act as a DNA unwinding enzyme. Cyclin D1-dependent kinase, CDK4, is found to associate with this protein, and may regulate the binding of this protein with the tumor suppressor protein RB1/RB. Alternatively spliced transcript variants encoding distinct isoforms have been reported. [provided by RefSeq, Jul 2008] |
| Synonyms: | CDC47; MCM2; P1.1-MCM3; P1CDC47; P85MCM; PNAS146; PPP1R104 |
| Note: | Immunogen Sequence Homology: Human: 100%; Rat: 92%; Horse: 92%; Bovine: 92%; Rabbit: 92%; Pig: 85%; Guinea pig: 85% |
| Protein Families: | Transcription Factors |
| Protein Pathways: | Cell cycle, DNA replication |

Product images:

WB Suggested Anti-MCM7 Antibody Titration: 1.25 ug/ml; Positive Control: Daudi cell lysate
MCM7 is strongly supported by BioGPS gene expression data to be expressed in Human Daudi cells



Human kidney