

Product datasheet for **TA341685**

MCM6 Rabbit Polyclonal Antibody

Product data:

Product Type:	Primary Antibodies
Applications:	IHC, WB
Recommended Dilution:	WB, IHC
Reactivity:	Human
Host:	Rabbit
Isotype:	IgG
Clonality:	Polyclonal
Immunogen:	The immunogen for anti-MCM6 antibody: synthetic peptide directed towards the C terminal of human MCM6. Synthetic peptide located within the following region: RIIEKVIHRLTHYDHLIELTQAGLKGSTEGSESYEEDPYLVVNPNYLLE
Formulation:	Liquid. Purified antibody supplied in 1x PBS buffer with 0.09% (w/v) sodium azide and 2% sucrose. <i>Note that this product is shipped as lyophilized powder to China customers.</i>
Concentration:	lot specific
Conjugation:	Unconjugated
Storage:	Store at -20°C as received.
Stability:	Stable for 12 months from date of receipt.
Predicted Protein Size:	90 kDa
Gene Name:	minichromosome maintenance complex component 6
Database Link:	NP_005906 Entrez Gene 4175 Human Q14566



[View online »](#)

Background: The protein encoded by this gene is one of the highly conserved mini-chromosome maintenance proteins (MCM) that are essential for the initiation of eukaryotic genome replication. The hexameric protein complex formed by the MCM proteins is a key component of the pre-replication complex (pre-RC) and may be involved in the formation of replication forks and in the recruitment of other DNA replication related proteins. The MCM complex consisting of this protein and MCM2, 4 and 7 proteins possesses DNA helicase activity, and may act as a DNA unwinding enzyme. The phosphorylation of the complex by CDC2 kinase reduces the helicase activity, suggesting a role in the regulation of DNA replication. Single nucleotide polymorphisms in the intron regions of this gene are associated with differential transcriptional activation of the promoter of the neighboring lactase gene and, thereby, influence lactose intolerance in early adulthood. [provided by RefSeq, May 2012]

Synonyms: MCG40308; Mis5; P105MCM

Note: Immunogen Sequence Homology: Dog: 100%; Pig: 100%; Horse: 100%; Human: 100%; Bovine: 100%; Rabbit: 100%; Guinea pig: 100%; Rat: 93%; Mouse: 93%

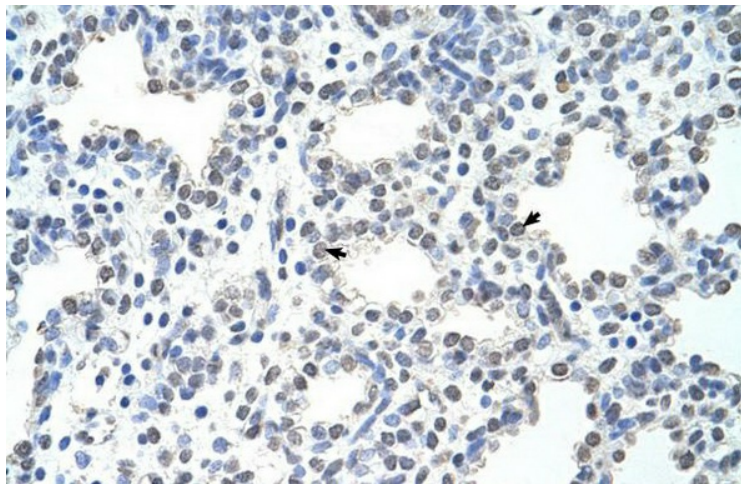
Protein Families: Stem cell - Pluripotency, Transcription Factors

Protein Pathways: Cell cycle, DNA replication

Product images:



WB Suggested Anti-MCM6 Antibody Titration: 0.2-1 ug/ml; ELISA Titer: 1:62500; Positive Control: HepG2 cell lysate



Human Intestine