

## Product datasheet for **TA341684**

### MCM4 Rabbit Polyclonal Antibody

#### Product data:

Product Type:	Primary Antibodies
Applications:	WB
Recommended Dilution:	WB
Reactivity:	Human
Host:	Rabbit
Isotype:	IgG
Clonality:	Polyclonal
Immunogen:	The immunogen for anti-MCM4 antibody: synthetic peptide directed towards the middle region of human MCM4. Synthetic peptide located within the following region: VYKTHIDVIHYRKTDKRLHGLDEEAEQKLFSEKRVLLKELSRKPDIE
Formulation:	Liquid. Purified antibody supplied in 1x PBS buffer with 0.09% (w/v) sodium azide and 2% sucrose. <i>Note that this product is shipped as lyophilized powder to China customers.</i>
Concentration:	lot specific
Conjugation:	Unconjugated
Storage:	Store at -20°C as received.
Stability:	Stable for 12 months from date of receipt.
Predicted Protein Size:	95 kDa
Gene Name:	minichromosome maintenance complex component 4
Database Link:	<a href="#">NP_005905</a> <a href="#">Entrez Gene 4173 Human</a> <a href="#">P33991</a>



[View online »](#)

**Background:**

The protein encoded by this gene is one of the highly conserved mini-chromosome maintenance proteins (MCM) that are essential for the initiation of eukaryotic genome replication. The hexameric protein complex formed by MCM proteins is a key component of the pre-replication complex (pre-RC) and may be involved in the formation of replication forks and in the recruitment of other DNA replication related proteins. The MCM complex consisting of this protein and MCM2, 6 and 7 proteins possesses DNA helicase activity, and may act as a DNA unwinding enzyme. The phosphorylation of this protein by CDC2 kinase reduces the DNA helicase activity and chromatin binding of the MCM complex. This gene is mapped to a region on the chromosome 8 head-to-head next to the PRKDC/DNA-PK, a DNA-activated protein kinase involved in the repair of DNA double-strand breaks. Alternatively spliced transcript variants encoding the same protein have been reported. [provided by RefSeq, Jul 2008]

**Synonyms:**

CDC21; CDC54; hCdc21; NKCD; NKGCD; P1-CDC21

**Note:**

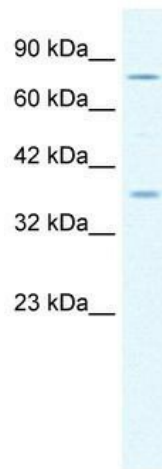
Immunogen Sequence Homology: Dog: 100%; Pig: 100%; Rat: 100%; Horse: 100%; Human: 100%; Mouse: 100%; Bovine: 100%; Rabbit: 100%; Guinea pig: 100%; Zebrafish: 85%

**Protein Families:**

Stem cell - Pluripotency, Transcription Factors

**Protein Pathways:**

Cell cycle, DNA replication

**Product images:**

WB Suggested Anti-MCM4 Antibody Titration:  
1.25 ug/ml; ELISA Titer: 1:12500; Positive Control:  
Jurkat cell lysate MCM4 is strongly supported by  
BioGPS gene expression data to be expressed in  
Human Jurkat cells