

Product datasheet for **TA341683**

MCM3 Rabbit Polyclonal Antibody

Product data:

Product Type:	Primary Antibodies
Applications:	IHC, WB
Recommended Dilution:	WB, IHC
Reactivity:	Human
Host:	Rabbit
Isotype:	IgG
Clonality:	Polyclonal
Immunogen:	The immunogen for anti-MCM3 antibody: synthetic peptide directed towards the C terminal of human MCM3. Synthetic peptide located within the following region: SQEDQEQKRKRTRQPDADKDGSDPYDFSDTEEEMPQVHTPKTADSQE
Formulation:	Liquid. Purified antibody supplied in 1x PBS buffer with 0.09% (w/v) sodium azide and 2% sucrose. <i>Note that this product is shipped as lyophilized powder to China customers.</i>
Concentration:	lot specific
Conjugation:	Unconjugated
Storage:	Store at -20°C as received.
Stability:	Stable for 12 months from date of receipt.
Predicted Protein Size:	89 kDa
Gene Name:	minichromosome maintenance complex component 3
Database Link:	NP_002379 Entrez Gene 4172 Human P25205



[View online »](#)

Background:

The protein encoded by this gene is one of the highly conserved mini-chromosome maintenance proteins (MCM) that are involved in the initiation of eukaryotic genome replication. The hexameric protein complex formed by MCM proteins is a key component of the pre-replication complex (pre-RC) and may be involved in the formation of replication forks and in the recruitment of other DNA replication related proteins. This protein is a subunit of the protein complex that consists of MCM2-7. It has been shown to interact directly with MCM5/CDC46. This protein also interacts with and is acetylated by MCM3AP, a chromatin-associated acetyltransferase. The acetylation of this protein inhibits the initiation of DNA replication and cell cycle progression. Two transcript variants encoding different isoforms have been found for this gene. [provided by RefSeq, Jul 2012]

Synonyms:

HCC5; P1-MCM3; P1.h; RLF8

Note:

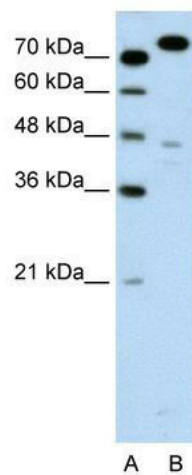
Immunogen Sequence Homology: Pig: 100%; Rat: 100%; Horse: 100%; Human: 100%; Dog: 93%; Rabbit: 93%; Guinea pig: 93%; Mouse: 92%; Bovine: 92%

Protein Families:

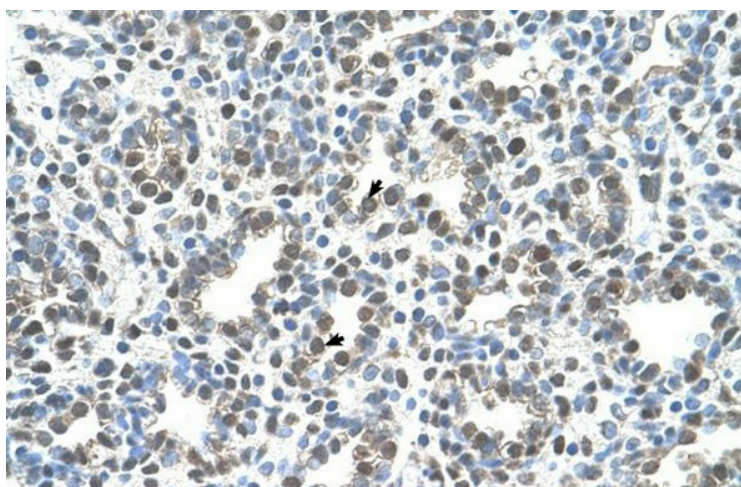
Druggable Genome, Stem cell - Pluripotency, Transcription Factors

Protein Pathways:

Cell cycle, DNA replication

Product images:

WB Suggested Anti-MCM3 Antibody Titration: 0.2-1 ug/ml; Positive Control: Jurkat cell lysate MCM3 is supported by BioGPS gene expression data to be expressed in Jurkat



Human Lung