

## Product datasheet for **TA341682**

### MCM3 Rabbit Polyclonal Antibody

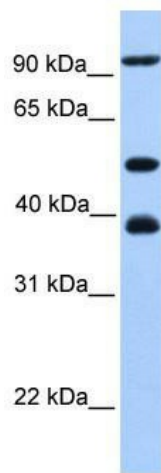
#### Product data:

|                         |  |
|-------------------------|--|
| Product Type:           | Primary Antibodies   |
| Applications:           | WB   |
| Recommended Dilution:   | IHC, WB  |
| Reactivity:             | Human  |
| Host:                   | Rabbit   |
| Isotype:                | IgG  |
| Clonality:              | Polyclonal   |
| Immunogen:              | The immunogen for anti-MCM3 antibody: synthetic peptide directed towards the C terminal of human MCM3. Synthetic peptide located within the following region:<br>YAYFKKLVLEKEKKRKRSEDESETEDEEEKSQEDQEQKRKRTRQPKDAK |
| Formulation:            | Liquid. Purified antibody supplied in 1x PBS buffer with 0.09% (w/v) sodium azide and 2% sucrose.<br><i>Note that this product is shipped as lyophilized powder to China customers.</i>                            |
| Concentration:          | lot specific   |
| Conjugation:            | Unconjugated   |
| Storage:                | Store at -20°C as received.  |
| Stability:              | Stable for 12 months from date of receipt.   |
| Predicted Protein Size: | 91 kDa   |
| Gene Name:              | minichromosome maintenance complex component 3   |
| Database Link:          | <a href="#">NP_002379</a><br><a href="#">Entrez Gene 4172 Human</a><br><a href="#">P25205</a>  |



[View online »](#)

|                          |   |
|--------------------------|---|
| <b>Background:</b>       | The protein encoded by this gene is one of the highly conserved mini-chromosome maintenance proteins (MCM) that are involved in the initiation of eukaryotic genome replication. The hexameric protein complex formed by MCM proteins is a key component of the pre-replication complex (pre-RC) and may be involved in the formation of replication forks and in the recruitment of other DNA replication related proteins. This protein is a subunit of the protein complex that consists of MCM2-7. It has been shown to interact directly with MCM5/CDC46. This protein also interacts with and is acetylated by MCM3AP, a chromatin-associated acetyltransferase. The acetylation of this protein inhibits the initiation of DNA replication and cell cycle progression. Two transcript variants encoding different isoforms have been found for this gene. [provided by RefSeq, Jul 2012] |
| <b>Synonyms:</b>         | HCC5; P1-MCM3; P1.h; RLF8   |
| <b>Note:</b>             | Immunogen Sequence Homology: Pig: 100%; Rat: 100%; Human: 100%; Bovine: 100%; Rabbit: 100%; Guinea pig: 100%; Dog: 93%; Horse: 93%; Mouse: 93%; Yeast: 82%  |
| <b>Protein Families:</b> | Druggable Genome, Stem cell - Pluripotency, Transcription Factors   |
| <b>Protein Pathways:</b> | Cell cycle, DNA replication   |

**Product images:**

WB Suggested Anti-MCM3 Antibody Titration: 0.2-1 ug/ml; ELISA Titer: 1:312500; Positive Control: 721\_B cell lysate MCM3 is supported by BioGPS gene expression data to be expressed in 721\_B