

Product datasheet for **TA341681**

GJE1 (GJC3) Rabbit Polyclonal Antibody

Product data:

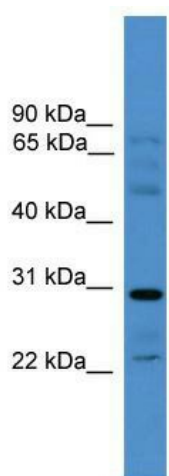
Product Type:	Primary Antibodies
Applications:	WB
Recommended Dilution:	WB
Reactivity:	Human
Host:	Rabbit
Isotype:	IgG
Clonality:	Polyclonal
Immunogen:	The immunogen for anti-GJC3 antibody: synthetic peptide directed towards the middle region of human GJC3. Synthetic peptide located within the following region: WHWELSGKKGKEETLIQGREGNTDVPGAGSLRLLWAYVAQLGARLVLEGAA
Formulation:	Liquid. Purified antibody supplied in 1x PBS buffer with 0.09% (w/v) sodium azide and 2% sucrose. <i>Note that this product is shipped as lyophilized powder to China customers.</i>
Concentration:	lot specific
Conjugation:	Unconjugated
Storage:	Store at -20°C as received.
Stability:	Stable for 12 months from date of receipt.
Predicted Protein Size:	31 kDa
Gene Name:	gap junction protein gamma 3
Database Link:	NP_853516 Entrez Gene 349149 Human Q8NFK1
Background:	This gene encodes a gap junction protein. The encoded protein, also known as a connexin, plays a role in formation of gap junctions, which provide direct connections between neighboring cells. Mutations in this gene have been reported to be associated with nonsyndromic hearing loss. [provided by RefSeq, Feb 2010]
Synonyms:	CX29; CX30.2; CX31.3; GJE1
Note:	Immunogen Sequence Homology: Human: 100%



[View online »](#)

Protein Families: Transmembrane

Product images:



WB Suggested Anti-GJC3 Antibody Titration: 0.2-1 ug/ml; ELISA Titer: 1:312500; Positive Control: PANC1 cell lysate