

## Product datasheet for TA341680

### GJE1 (GJC3) Rabbit Polyclonal Antibody

#### Product data:

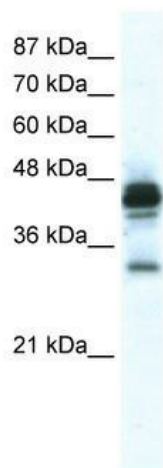
Product Type:	Primary Antibodies
Applications:	WB
Recommended Dilution:	WB
Reactivity:	Human
Host:	Rabbit
Isotype:	IgG
Clonality:	Polyclonal
Immunogen:	The immunogen for anti-GJE1 antibody: synthetic peptide directed towards the C terminal of human GJE1. Synthetic peptide located within the following region: KYFLTSESTRRHKKATDSLPPVETKEQFQEAVPGRSLAQEKQRPVGPDA
Formulation:	Liquid. Purified antibody supplied in 1x PBS buffer with 0.09% (w/v) sodium azide and 2% sucrose.
Concentration:	lot specific
Conjugation:	Unconjugated
Storage:	Store at -20°C as received.
Stability:	Stable for 12 months from date of receipt.
Predicted Protein Size:	31 kDa
Gene Name:	gap junction protein gamma 3
Database Link:	<a href="#">NP_853516</a> <a href="#">Entrez Gene 349149 Human</a> <a href="#">Q8NFK1</a>
Background:	This gene encodes a gap junction protein. The encoded protein, also known as a connexin, plays a role in formation of gap junctions, which provide direct connections between neighboring cells. Mutations in this gene have been reported to be associated with nonsyndromic hearing loss. [provided by RefSeq, Feb 2010]
Synonyms:	CX29; CX30.2; CX31.3; GJE1
Note:	Immunogen Sequence Homology: Human: 100%



[View online »](#)

Protein Families: Transmembrane

### Product images:



WB Suggested Anti-GJE1 Antibody Titration: 2.5 ug/ml; ELISA Titer: 1:1562500; Positive Control: Jurkat cell lysate