

## Product datasheet for **TA341679**

### TJP1 Rabbit Polyclonal Antibody

#### Product data:

Product Type:	Primary Antibodies
Applications:	IHC, WB
Recommended Dilution:	WB, IHC
Reactivity:	Human
Host:	Rabbit
Isotype:	IgG
Clonality:	Polyclonal
Immunogen:	The immunogen for anti-TJP1 antibody: synthetic peptide directed towards the middle region of human TJP1. Synthetic peptide located within the following region: QNHVLKQPAVSHPGHRPDKEPNLTYEPQLPYVEKQASRDLEQPTYRYESS
Formulation:	Liquid. Purified antibody supplied in 1x PBS buffer with 0.09% (w/v) sodium azide and 2% sucrose. <i>Note that this product is shipped as lyophilized powder to China customers.</i>
Concentration:	lot specific
Conjugation:	Unconjugated
Storage:	Store at -20°C as received.
Stability:	Stable for 12 months from date of receipt.
Predicted Protein Size:	187 kDa
Gene Name:	tight junction protein 1
Database Link:	<a href="#">NP_783297</a> <a href="#">Entrez Gene 7082 Human</a> <a href="#">Q07157</a>
Background:	This gene encodes a protein located on a cytoplasmic membrane surface of intercellular tight junctions. The encoded protein may be involved in signal transduction at cell-cell junctions. Alternative splicing of this gene results in multiple transcript variants. [provided by RefSeq, Jul 2014]
Synonyms:	ZO-1



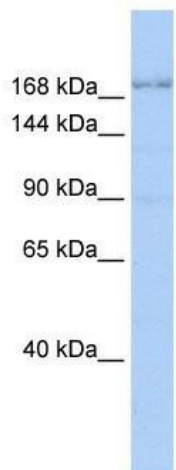
[View online »](#)

**Note:** Immunogen Sequence Homology: Human: 100%; Rabbit: 100%; Pig: 93%; Rat: 93%; Horse: 93%; Dog: 92%; Mouse: 87%; Guinea pig: 86%

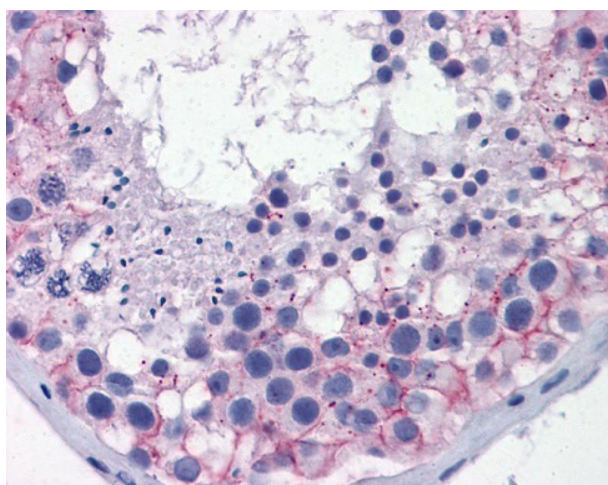
**Protein Families:** Druggable Genome

**Protein Pathways:** Adherens junction, Epithelial cell signaling in Helicobacter pylori infection, Gap junction, Tight junction, Vibrio cholerae infection

**Product images:**



WB Suggested Anti-TJP1 Antibody Titration: 0.2-1 ug/ml; ELISA Titer: 1:312500; Positive Control: HepG2 cell lysate



Testis