

Product datasheet for TA341677

Connexin 40.1 (GJD4) Rabbit Polyclonal Antibody

Product data:

Product Type:	Primary Antibodies
Applications:	WB
Recommended Dilution:	WB
Reactivity:	Human
Host:	Rabbit
Isotype:	IgG
Clonality:	Polyclonal
Immunogen:	The immunogen for anti-GJD4 antibody: synthetic peptide directed towards the middle region of human GJD4. Synthetic peptide located within the following region: HTKIPDEDESEVTSSASEKLGRQPRGRPHREAAQDPRGSGSEEQPSAAPS
Formulation:	Liquid. Purified antibody supplied in 1x PBS buffer with 0.09% (w/v) sodium azide and 2% sucrose. <i>Note that this product is shipped as lyophilized powder to China customers.</i>
Concentration:	lot specific
Conjugation:	Unconjugated
Storage:	Store at -20°C as received.
Stability:	Stable for 12 months from date of receipt.
Predicted Protein Size:	40 kDa
Gene Name:	gap junction protein delta 4
Database Link:	NP_699199 Entrez Gene 219770 Human Q96KN9
Background:	Connexins, such as GJD4, are involved inThe formation of gap junctions, intercellular conduits that directly connectThe cytoplasm of contacting cells. Each gap junction channel is formed by docking of 2 hemichannels, each of which contains 6 connexin subunits (Sohl et al., 2003 [PubMed 12881038]). [supplied by OMIM, Mar 2008]. ##Evidence-Data-START## Transcript exon combination :: AK074504.1, AJ414564.1 [ECO:0000332] ##Evidence-Data-END##
Synonyms:	CX40.1

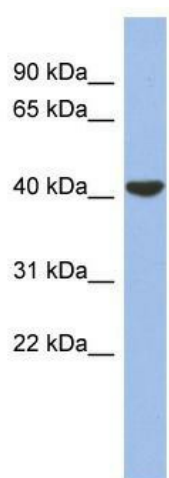


[View online »](#)

Note: Immunogen Sequence Homology: Human: 100%

Protein Families: Transmembrane

Product images:



WB Suggested Anti-GJD4 Antibody Titration: 0.2-1 ug/ml; ELISA Titer: 1:62500; Positive Control: PANC1 cell lysate