

## Product datasheet for **TA341676**

### GJB4 Rabbit Polyclonal Antibody

#### Product data:

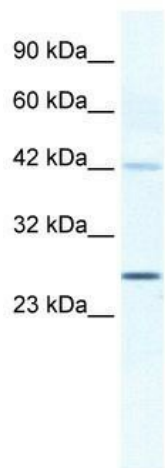
Product Type:	Primary Antibodies
Applications:	WB
Recommended Dilution:	WB
Reactivity:	Human
Host:	Rabbit
Isotype:	IgG
Clonality:	Polyclonal
Immunogen:	The immunogen for anti-GJB4 antibody: synthetic peptide directed towards the middle region of human GJB4. Synthetic peptide located within the following region: CPSLLVVMHVAYREERERKHHLKHGPNAPSLYDNLSSKRGGLWWTYLLSL
Formulation:	Liquid. Purified antibody supplied in 1x PBS buffer with 0.09% (w/v) sodium azide and 2% sucrose. <i>Note that this product is shipped as lyophilized powder to China customers.</i>
Concentration:	lot specific
Conjugation:	Unconjugated
Storage:	Store at -20°C as received.
Stability:	Stable for 12 months from date of receipt.
Predicted Protein Size:	29 kDa
Gene Name:	gap junction protein beta 4
Database Link:	<a href="#">NP_694944</a> <a href="#">Entrez Gene 127534 Human</a> <a href="#">Q9NTQ9</a>
Background:	This gene encodes a transmembrane connexin protein that is a component of gap junctions. Mutations in this gene have been associated with erythrokeratoderma variabilis, progressive symmetric erythrokeratoderma and hearing impairment. [provided by RefSeq, Dec 2009]
Synonyms:	CX30.3; EKV
Note:	Immunogen Sequence Homology: Horse: 100%; Human: 100%; Dog: 92%; Rat: 92%; Bovine: 92%; Mouse: 86%



[View online »](#)

Protein Families: Ion Channels: Other, Transmembrane

### Product images:



WB Suggested Anti-GJB4 Antibody Titration: 1.25 ug/ml; ELISA Titer: 1:1562500; Positive Control: Jurkat cell lysate