

Product datasheet for **TA341675**

GJC1 (GJD3) Rabbit Polyclonal Antibody

Product data:

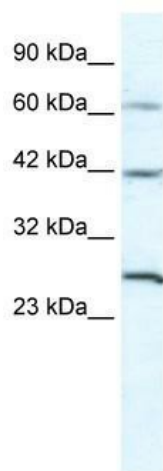
Product Type:	Primary Antibodies
Applications:	WB
Recommended Dilution:	WB
Reactivity:	Human
Host:	Rabbit
Isotype:	IgG
Clonality:	Polyclonal
Immunogen:	The immunogen for anti-GJC1 antibody: synthetic peptide directed towards the N terminal of human GJC1. Synthetic peptide located within the following region: IFRILVLATVGGAVFEDEQEEFVCNTLQPGCRQTCYDRAFPVSHYRFWLF
Formulation:	Liquid. Purified antibody supplied in 1x PBS buffer with 0.09% (w/v) sodium azide and 2% sucrose. <i>Note that this product is shipped as lyophilized powder to China customers.</i>
Concentration:	lot specific
Conjugation:	Unconjugated
Storage:	Store at -20°C as received.
Stability:	Stable for 12 months from date of receipt.
Predicted Protein Size:	32 kDa
Gene Name:	gap junction protein delta 3
Database Link:	NP_689343 Entrez Gene 125111 Human Q8N144
Background:	This gene is a member of the large family of connexins that are required for the formation of gap junctions. Six connexin monomers form a hemichannel, or connexon, on the cell surface. This connexon can interact with a connexon from a neighboring cell, thus forming a channel linking the cytoplasm of the 2 cells. [provided by RefSeq, Jul 2008]
Synonyms:	Cx30.2; CX31.9; GJA11; GJC1



[View online »](#)

Note: Immunogen Sequence Homology: Pig: 100%; Rat: 100%; Human: 100%; Mouse: 100%; Rabbit: 93%; Horse: 86%

Product images:



WB Suggested Anti-GJC1 Antibody Titration: 5.0 ug/ml; ELISA Titer: 1:62500; Positive Control: HepG2 cell lysate