

## Product datasheet for **TA341673**

### GJA3 Rabbit Polyclonal Antibody

#### Product data:

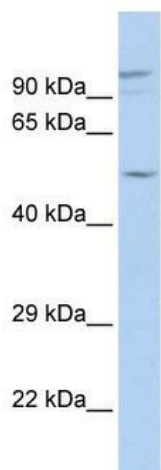
Product Type:	Primary Antibodies
Applications:	WB
Recommended Dilution:	WB
Reactivity:	Human
Host:	Rabbit
Isotype:	IgG
Clonality:	Polyclonal
Immunogen:	The immunogen for anti-GJA3 antibody: synthetic peptide directed towards the N terminal of human GJA3. Synthetic peptide located within the following region: ISHIRFWALQIIFVSTPTLIYLGHVHIVRMEKKKEREEEEQLKRESPS
Formulation:	Liquid. Purified antibody supplied in 1x PBS buffer with 0.09% (w/v) sodium azide and 2% sucrose. <i>Note that this product is shipped as lyophilized powder to China customers.</i>
Concentration:	lot specific
Conjugation:	Unconjugated
Storage:	Store at -20°C as received.
Stability:	Stable for 12 months from date of receipt.
Predicted Protein Size:	47 kDa
Gene Name:	gap junction protein alpha 3
Database Link:	<a href="#">NP_068773</a> <a href="#">Entrez Gene 2700 Human</a> <a href="#">Q9Y6H8</a>
Background:	The protein encoded byThis gene is a connexin and is a component of lens fiber gap junctions. Defects inThis gene are a cause of zonular pulverulent cataract type 3 (CZP3). [provided by RefSeq, Jan 2010]
Synonyms:	CTRCT14; CX46; CZP3
Note:	Immunogen Sequence Homology: Human: 100%; Pig: 91%; Horse: 91%; Yeast: 91%; Rat: 90%; Zebrafish: 90%; Mouse: 83%



[View online »](#)

Protein Families: Druggable Genome, Ion Channels: Other, Transmembrane

### Product images:



WB Suggested Anti-GJA3 Antibody Titration: 0.2-1 ug/ml; ELISA Titer: 1:62500; Positive Control: 721\_B cell lysate GJA3 is supported by BioGPS gene expression data to be expressed in 721\_B