

Product datasheet for TA341672

Gjd2 Rabbit Polyclonal Antibody

Product data:

Product Type:	Primary Antibodies
Applications:	WB
Recommended Dilution:	WB
Reactivity:	Rat
Host:	Rabbit
Isotype:	IgG
Clonality:	Polyclonal
Immunogen:	The immunogen for Anti-Gjd2 antibody is: synthetic peptide directed towards the middle region of Rat Gjd2. Synthetic peptide located within the following region: GGGGSGGSKREDKKLQNAIVNGVLQNTETTSKETEPDCLEVKELAPHPSG
Formulation:	Liquid. Purified antibody supplied in 1x PBS buffer with 0.09% (w/v) sodium azide and 2% sucrose. <i>Note that this product is shipped as lyophilized powder to China customers.</i>
Concentration:	lot specific
Conjugation:	Unconjugated
Storage:	Store at -20°C as received.
Stability:	Stable for 12 months from date of receipt.
Predicted Protein Size:	35 kDa
Gene Name:	gap junction protein, delta 2
Database Link:	NP_062154 Entrez Gene 50564 Rat O70610
Background:	component of gap junctions that may mediate cell-cell signaling that contributes to insulin cell function [RGD, Feb 2006]. Publication Note:This RefSeq record includes a subset ofThe publications that are available forThis gene. Please seeThe Gene record to access additional publications. ##Evidence-Data-START## Transcript exon combination :: Y16898.1, AJ296282.1 [ECO:0000332] RNAseq introns :: single sample supports all introns ERS160522, ERS160565 [ECO:0000348] ##Evidence-Data-END##

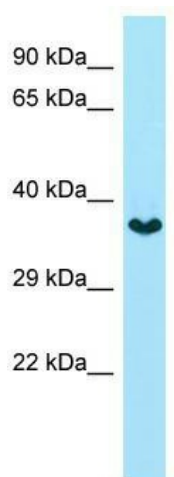


[View online »](#)

Synonyms: Connexin-36; CX36; GJA9; MGC138315; MGC138319

Note: Immunogen Sequence Homology: Dog: 100%; Pig: 100%; Rat: 100%; Horse: 100%; Human: 100%; Mouse: 100%; Bovine: 100%; Rabbit: 100%; Guinea pig: 100%

Product images:



Host: Rabbit; Target Name: Gjd2; Sample Tissue: Rat Kidney lysates; Antibody Dilution: 1.0 ug/ml