

## Product datasheet for TA341671

### GJD2 Rabbit Polyclonal Antibody

#### Product data:

Product Type:	Primary Antibodies
Applications:	IHC, WB
Recommended Dilution:	WB, IHC
Reactivity:	Human, Mouse
Host:	Rabbit
Isotype:	IgG
Clonality:	Polyclonal
Immunogen:	The immunogen for anti-GJD2 antibody: synthetic peptide directed towards the middle region of human GJD2. Synthetic peptide located within the following region: ELNHLGWRKIKLAVRGAQAKRKSIEIRNKDLPRVSVNFGRTQSSDSAY
Formulation:	Liquid. Purified antibody supplied in 1x PBS buffer with 0.09% (w/v) sodium azide and 2% sucrose. <i>Note that this product is shipped as lyophilized powder to China customers.</i>
Concentration:	lot specific
Conjugation:	Unconjugated
Storage:	Store at -20°C as received.
Stability:	Stable for 12 months from date of receipt.
Predicted Protein Size:	36 kDa
Gene Name:	gap junction protein delta 2
Database Link:	<a href="#">NP_065711</a> <a href="#">Entrez Gene 14617 Mouse</a> <a href="#">Entrez Gene 57369 Human</a> <a href="#">Q9UKL4</a>
Background:	This gene encodes a member ofThe connexin protein family. Connexins are gap junction proteins which are arranged in groups of 6 around a central pore to form a connexon, a component ofThe gap junction intercellular channel.The channels formed byThis protein allow cationic molecule exchange between human beta cells and may function inThe regulation of insulin secretion. [provided by RefSeq, Oct 2012]
Synonyms:	CX36; GJA9



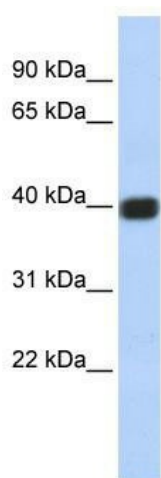
[View online »](#)

**Note:** Immunogen Sequence Homology: Dog: 100%; Pig: 100%; Rat: 100%; Horse: 100%; Human: 100%; Mouse: 100%; Bovine: 100%; Rabbit: 100%; Guinea pig: 100%; Zebrafish: 92%

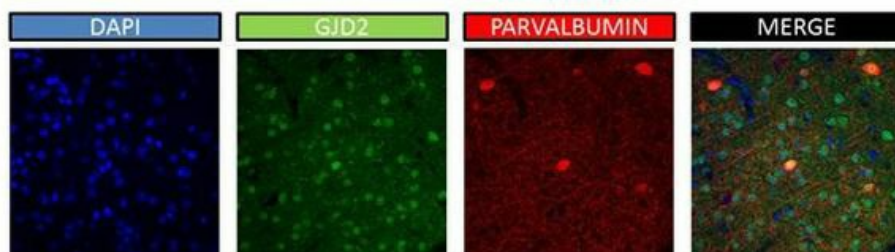
**Protein Families:** Ion Channels: Other, Transmembrane

**Protein Pathways:** Gap junction

**Product images:**



WB Suggested Anti-GJD2 Antibody Titration: 0.2-1 ug/ml; ELISA Titer: 1:62500; Positive Control: Jurkat cell lysate GJD2 is supported by BioGPS gene expression data to be expressed in Jurkat



Sample Type: mouse brain; Dilution: dilution 1:2000