

Product datasheet for TA341670

GJC2 Rabbit Polyclonal Antibody

Product data:

Product Type:	Primary Antibodies
Applications:	WB
Recommended Dilution:	WB
Reactivity:	Human
Host:	Rabbit
Isotype:	IgG
Clonality:	Polyclonal
Immunogen:	The immunogen for anti-GJC2 antibody: synthetic peptide directed towards the middle region of human GJC2. Synthetic peptide located within the following region: APASRTGSATSAGTVGEQGRPGTHERPGAKPRAGSEKGSASSRDGKTTVW
Formulation:	Liquid. Purified antibody supplied in 1x PBS buffer with 0.09% (w/v) sodium azide and 2% sucrose. <i>Note that this product is shipped as lyophilized powder to China customers.</i>
Concentration:	lot specific
Conjugation:	Unconjugated
Storage:	Store at -20°C as received.
Stability:	Stable for 12 months from date of receipt.
Predicted Protein Size:	47 kDa
Gene Name:	gap junction protein gamma 2
Database Link:	NP_065168 Entrez Gene 57165 Human Q5T442
Background:	This gene encodes a gap junction protein. Gap junction proteins are members of a large family of homologous connexins and comprise 4 transmembrane, 2 extracellular, and 3 cytoplasmic domains. This gene plays a key role in central myelination and is involved in peripheral myelination in humans. Defects in this gene are the cause of autosomal recessive Pelizaeus-Merzbacher-like disease-1. [provided by RefSeq, Jul 2008]
Synonyms:	CX46.6; Cx47; GJA12; HLD2; LMPH1C; PMLDAR; SPG44

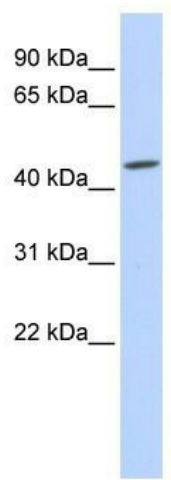


[View online »](#)

Note: Immunogen Sequence Homology: Human: 100%; Rabbit: 100%

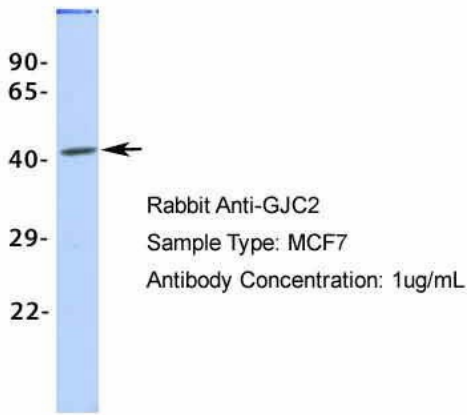
Protein Families: Ion Channels: Other

Product images:



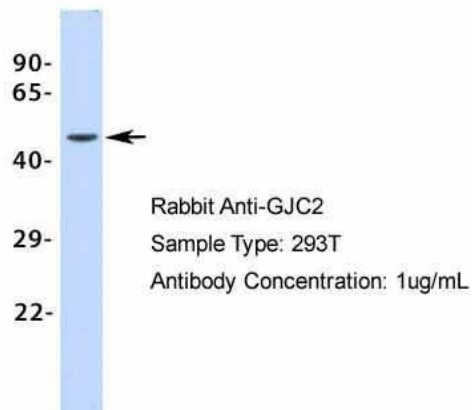
WB Suggested Anti-GJC2 Antibody Titration: 0.2-1 ug/ml; ELISA Titer: 1:312500; Positive Control: MCF7 cell lysate

GJC2



Host: Rabbit; Target Name: GJC2; Sample Tissue: MCF7; Antibody Dilution: 1.0 ug/ml

GJC2



Host: Rabbit; Target Name: GJC2; Sample Tissue: 293T; Antibody Dilution: 1.0 ug/ml GJC2 is supported by BioGPS gene expression data to be expressed in HEK293T