

## Product datasheet for **TA341669**

### IFT140 Rabbit Polyclonal Antibody

#### Product data:

Product Type:	Primary Antibodies
Applications:	WB
Recommended Dilution:	WB
Reactivity:	Mouse, Human
Host:	Rabbit
Isotype:	IgG
Clonality:	Polyclonal
Immunogen:	The immunogen for anti-IFT140 antibody: synthetic peptide directed towards the N terminal of human IFT140. Synthetic peptide located within the following region: VLRWSPSGNCLLSGDRLGVLLLWRLDQRGRVQGTPLLKHEYGKHLTHCIF
Formulation:	Liquid. Purified antibody supplied in 1x PBS buffer with 0.09% (w/v) sodium azide and 2% sucrose. <i>Note that this product is shipped as lyophilized powder to China customers.</i>
Concentration:	lot specific
Conjugation:	Unconjugated
Storage:	Store at -20°C as received.
Stability:	Stable for 12 months from date of receipt.
Predicted Protein Size:	165 kDa
Gene Name:	intraflagellar transport 140
Database Link:	<a href="#">NP_055529</a> <a href="#">Entrez Gene 106633 Mouse</a> <a href="#">Entrez Gene 9742 Human</a> <a href="#">Q96RY7</a>
Background:	This gene encodes one of the subunits of the intraflagellar transport (IFT) complex A. Intraflagellar transport is involved in the genesis, resorption and signaling of primary cilia. The primary cilium is a microtubule-based sensory organelle at the surface of most quiescent mammalian cells, that receives signals from its environment, such as the flow of fluid, light or odors, and transduces those signals to the nucleus. Loss of the corresponding protein in mouse results in renal cystic disease. [provided by RefSeq, Jun 2012]

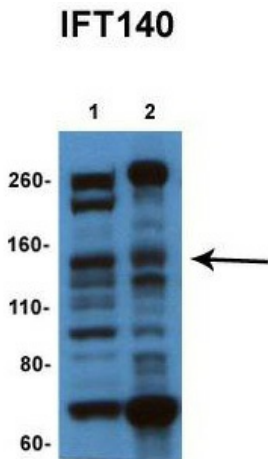


[View online »](#)

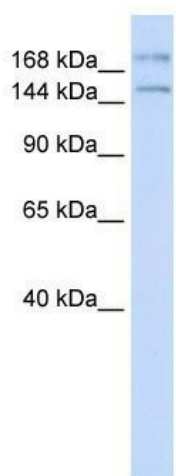
**Synonyms:** c305C8.4; c380F5.1; gs114; MZSDS; SRTD9; WDTC2

**Note:** Immunogen Sequence Homology: Pig: 100%; Rat: 100%; Horse: 100%; Human: 100%; Mouse: 100%; Guinea pig: 100%; Rabbit: 93%; Bovine: 92%

**Product images:**



Sample Type: 1. Human RPE cell line (15ug); 2. Bovine retina lysate cleared at 100,000Xg for 2 hours (15ug); Primary Dilution: 1:1000; Secondary Antibody: goat anti-rabbit HRP; Secondary Dilution: 1:10,000; Image Submitted By: Gerald Liew; Stanford Univer



WB Suggested Anti-IFT140 Antibody Titration: 0.2-1 ug/ml; ELISA Titer: 1:62500; Positive Control: Human brain