

Product datasheet for **TA341668**

Mycbp Rabbit Polyclonal Antibody

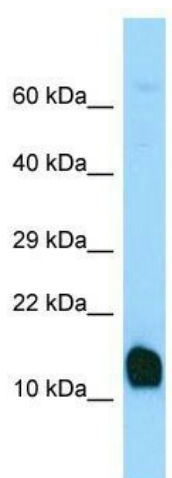
Product data:

Product Type:	Primary Antibodies
Applications:	WB
Recommended Dilution:	WB
Reactivity:	Mouse
Host:	Rabbit
Isotype:	IgG
Clonality:	Polyclonal
Immunogen:	The immunogen for Anti-Mycbp antibody is: synthetic peptide directed towards the C-terminal region of Mouse Mycbp. Synthetic peptide located within the following region: HLGAATPENPEIELLRLELAEMKEKYEATVEENKCLKAKLVQYEPPEEK
Formulation:	Liquid. Purified antibody supplied in 1x PBS buffer with 0.09% (w/v) sodium azide and 2% sucrose. <i>Note that this product is shipped as lyophilized powder to China customers.</i>
Concentration:	lot specific
Conjugation:	Unconjugated
Storage:	Store at -20°C as received.
Stability:	Stable for 12 months from date of receipt.
Predicted Protein Size:	12 kDa
Gene Name:	MYC binding protein
Database Link:	NP_062634 Entrez Gene 56309 Mouse Q9EQS3
Background:	May controlThe transcriptional activity of MYC. StimulatesThe activation of E box-dependent transcription by MYC.
Synonyms:	AMY-1; AMY1; FLJ41056
Note:	Immunogen Sequence Homology: Rat: 100%; Human: 100%; Dog: 93%; Pig: 93%; Horse: 93%; Mouse: 93%; Bovine: 93%; Rabbit: 93%; Guinea pig: 93%



[View online »](#)

Product images:



Host: Rabbit; Target Name: Mycbp; Sample
Tissue: Mouse Stomach lysates; Antibody
Dilution: 1.0 ug/ml