

Product datasheet for **TA341667**

GJB6 Rabbit Polyclonal Antibody

Product data:

Product Type:	Primary Antibodies
Applications:	WB
Recommended Dilution:	WB
Reactivity:	Human
Host:	Rabbit
Isotype:	IgG
Clonality:	Polyclonal
Immunogen:	The immunogen for anti-GJB6 antibody: synthetic peptide directed towards the middle region of human GJB6. Synthetic peptide located within the following region: CYLLLKVCFRRSKRAQTQKNHPNHALKESKQNMNELISDSGQNAITGFP
Formulation:	Liquid. Purified antibody supplied in 1x PBS buffer with 0.09% (w/v) sodium azide and 2% sucrose. <i>Note that this product is shipped as lyophilized powder to China customers.</i>
Concentration:	lot specific
Conjugation:	Unconjugated
Storage:	Store at -20°C as received.
Stability:	Stable for 12 months from date of receipt.
Predicted Protein Size:	30 kDa
Gene Name:	gap junction protein beta 6
Database Link:	NP_006774 Entrez Gene 10804 Human O95452



[View online »](#)

Background:

Gap junctions allow the transport of ions and metabolites between the cytoplasm of adjacent cells. They are formed by two hemichannels, made up of six connexin proteins assembled in groups. Each connexin protein has four transmembrane segments, two extracellular loops, a cytoplasmic loop formed between the two inner transmembrane segments, and the N- and C-terminus both being in the cytoplasm. The specificity of the gap junction is determined by which connexin proteins comprise the hemichannel. In the past, connexin protein names were based on their molecular weight, however the new nomenclature uses sequential numbers based on which form (alpha or beta) of the gap junction is present. This gene encodes one of the connexin proteins. Mutations in this gene have been found in some forms of deafness and in some families with hidrotic ectodermal dysplasia. [provided by RefSeq, Jul 2008]

Synonyms:

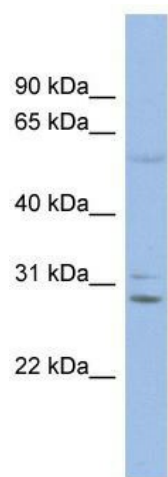
CX30; DFNA3; DFNA3B; DFNB1B; ECTD2; ED2; EDH; HED; HED2

Note:

Immunogen Sequence Homology: Human: 100%; Dog: 93%; Rat: 93%; Horse: 93%; Pig: 92%; Mouse: 92%; Guinea pig: 92%; Bovine: 86%; Rabbit: 85%; Goat: 79%

Protein Families:

Druggable Genome, Transmembrane

Product images:

WB Suggested Anti-GJB6 Antibody Titration: 0.2-1 ug/ml; ELISA Titer: 1:12500; Positive Control: THP-1 cell lysate