

Product datasheet for TA341666

GJC1 Rabbit Polyclonal Antibody

Product data:

Product Type:	Primary Antibodies
Applications:	WB
Recommended Dilution:	WB
Reactivity:	Human
Host:	Rabbit
Isotype:	IgG
Clonality:	Polyclonal
Immunogen:	The immunogen for anti-GJC1 antibody: synthetic peptide directed towards the middle region of human GJC1. Synthetic peptide located within the following region: ERLDLAVQAYSHQNNPHGPREKKAKVGSKAGSNKSTASSKSGDGKTSVWI
Formulation:	Liquid. Purified antibody supplied in 1x PBS buffer with 0.09% (w/v) sodium azide and 2% sucrose. <i>Note that this product is shipped as lyophilized powder to China customers.</i>
Concentration:	lot specific
Conjugation:	Unconjugated
Storage:	Store at -20°C as received.
Stability:	Stable for 12 months from date of receipt.
Predicted Protein Size:	45 kDa
Gene Name:	gap junction protein gamma 1
Database Link:	NP_005488 Entrez Gene 10052 Human P36383
Background:	This gene is a member of the connexin gene family. The encoded protein is a component of gap junctions, which are composed of arrays of intercellular channels that provide a route for the diffusion of low molecular weight materials from cell to cell. Alternatively spliced transcript variants encoding the same isoform have been described. [provided by RefSeq, Jul 2008]
Synonyms:	CX45; GJA7

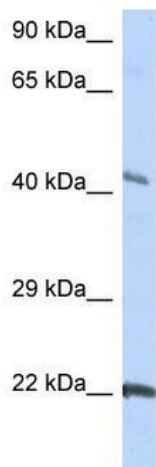


[View online »](#)

Note: Immunogen Sequence Homology: Human: 100%; Dog: 93%; Pig: 93%; Horse: 93%; Bovine: 93%; Rabbit: 93%; Guinea pig: 80%; Rat: 79%; Mouse: 79%

Protein Families: Ion Channels: Other, Transmembrane

Product images:



WB Suggested Anti-GJC1 Antibody Titration: 0.2-1 ug/ml; ELISA Titer: 1:12500; Positive Control: HepG2 cell lysate