

Product datasheet for TA341665

GJA8 Rabbit Polyclonal Antibody

Product data:

Product Type:	Primary Antibodies
Applications:	WB
Recommended Dilution:	WB
Reactivity:	Human
Host:	Rabbit
Isotype:	IgG
Clonality:	Polyclonal
Immunogen:	The immunogen for anti-GJA8 antibody: synthetic peptide directed towards the middle region of human GJA8. Synthetic peptide located within the following region: EEQEKVAVPEGEKVVETPGVDKEGEKEEPQSEKVSQGLPAEKTPSLCPPEL
Formulation:	Liquid. Purified antibody supplied in 1x PBS buffer with 0.09% (w/v) sodium azide and 2% sucrose. <i>Note that this product is shipped as lyophilized powder to China customers.</i>
Concentration:	lot specific
Conjugation:	Unconjugated
Storage:	Store at -20°C as received.
Stability:	Stable for 12 months from date of receipt.
Predicted Protein Size:	48 kDa
Gene Name:	gap junction protein alpha 8
Database Link:	NP_005258 Entrez Gene 2703 Human P48165
Background:	This gene encodes a transmembrane connexin protein that is necessary for lens growth and maturation of lens fiber cells. The encoded protein is a component of gap junction channels and functions in a calcium and pH-dependent manner. Mutations in this gene have been associated with zonular pulverulent cataracts, nuclear progressive cataracts, and cataract-microcornea syndrome. [provided by RefSeq, Dec 2009]
Synonyms:	CAE; CAE1; CTRCT1; CX50; CZP1; MP70

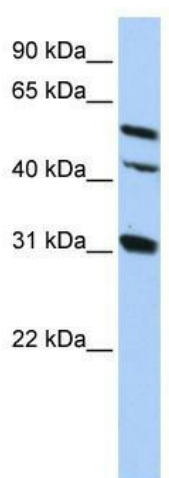


[View online »](#)

Note: Immunogen Sequence Homology: Human: 100%; Rat: 86%; Dog: 79%; Horse: 79%; Mouse: 79%

Protein Families: Druggable Genome, Ion Channels: Other, Transmembrane

Product images:



WB Suggested Anti-GJA8 Antibody Titration: 0.2-1 ug/ml; ELISA Titer: 1:62500; Positive Control: HepG2 cell lysate