

Product datasheet for **TA341663**

GJB2 Rabbit Polyclonal Antibody

Product data:

Product Type:	Primary Antibodies
Applications:	WB
Recommended Dilution:	WB
Reactivity:	Human
Host:	Rabbit
Isotype:	IgG
Clonality:	Polyclonal
Immunogen:	The immunogen for anti-GJB2 antibody: synthetic peptide directed towards the N terminal of human GJB2. Synthetic peptide located within the following region: STPALLVAMHVAYRRHEKRRKFIKGEIKSEFKDIEEIKTQKVRIEGLWW
Formulation:	Liquid. Purified antibody supplied in 1x PBS buffer with 0.09% (w/v) sodium azide and 2% sucrose. <i>Note that this product is shipped as lyophilized powder to China customers.</i>
Concentration:	lot specific
Conjugation:	Unconjugated
Storage:	Store at -20°C as received.
Stability:	Stable for 12 months from date of receipt.
Predicted Protein Size:	25 kDa
Gene Name:	gap junction protein beta 2
Database Link:	NP_003995 Entrez Gene 2706 Human P29033



[View online »](#)

Background:

This gene encodes a member of the gap junction protein family. The gap junctions were first characterized by electron microscopy as regionally specialized structures on plasma membranes of contacting adherent cells. These structures were shown to consist of cell-to-cell channels that facilitate the transfer of ions and small molecules between cells. The gap junction proteins, also known as connexins, purified from fractions of enriched gap junctions from different tissues differ. According to sequence similarities at the nucleotide and amino acid levels, the gap junction proteins are divided into two categories, alpha and beta. Mutations in this gene are responsible for as much as 50% of pre-lingual, recessive deafness. [provided by RefSeq, Oct 2008]

Synonyms:

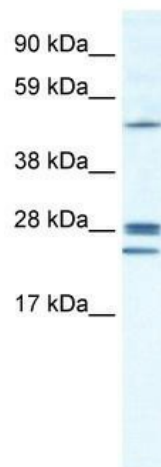
CX26; DFNA3; DFNA3A; DFNB1; DFNB1A; HID; KID; NSRD1; PPK

Note:

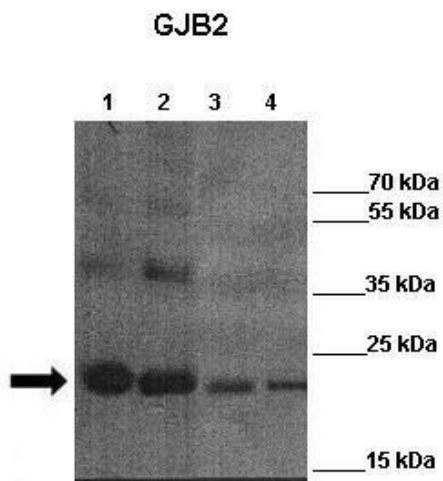
Immunogen Sequence Homology: Dog: 100%; Horse: 100%; Human: 100%; Rat: 93%; Pig: 86%; Mouse: 86%; Sheep: 86%; Bovine: 86%; Guinea pig: 86%; Rabbit: 79%

Protein Families:

Druggable Genome, Ion Channels: Other, Transmembrane

Product images:

WB Suggested Anti-GJB2 Antibody Titration: 1.25 ug/ml; ELISA Titer: 1:62500; Positive Control: Human Lung



WB Suggested Anti-GJB2 Antibody ; Positive Control: Lane 1: 4ug mCx26 elution fraction 6
Lane 2: 4ug mCx26 elution fraction 7 Lane 3: 4ug mCx26 elution fraction 6 + other Cx26 antibody
Lane 4: 4ug mCx26 elution fraction 7 + other Cx26 antibody; Primary An