

Product datasheet for TA341662

GJA4 Rabbit Polyclonal Antibody

Product data:

Product Type:	Primary Antibodies
Applications:	IHC, WB
Recommended Dilution:	WB, IHC
Reactivity:	Human
Host:	Rabbit
Isotype:	IgG
Clonality:	Polyclonal
Immunogen:	The immunogen for anti-GJA4 antibody: synthetic peptide directed towards the middle region of human GJA4. Synthetic peptide located within the following region: QKEGELRALPAKDPQVERALAAVERQMAKISVAEDGRLRIRGALMGTYVA
Formulation:	Liquid. Purified antibody supplied in 1x PBS buffer with 0.09% (w/v) sodium azide and 2% sucrose. <i>Note that this product is shipped as lyophilized powder to China customers.</i>
Concentration:	lot specific
Conjugation:	Unconjugated
Storage:	Store at -20°C as received.
Stability:	Stable for 12 months from date of receipt.
Predicted Protein Size:	37 kDa
Gene Name:	gap junction protein alpha 4
Database Link:	NP_002051 Entrez Gene 2701 Human P35212
Background:	This gene encodes a member of the connexin gene family. The encoded protein is a component of gap junctions, which are composed of arrays of intercellular channels that provide a route for the diffusion of low molecular weight materials from cell to cell. Mutations in this gene have been associated with atherosclerosis and a higher risk of myocardial infarction. [provided by RefSeq, Jul 2008]
Synonyms:	CX37

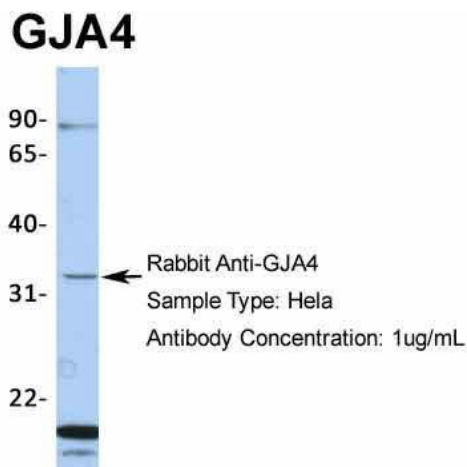


[View online »](#)

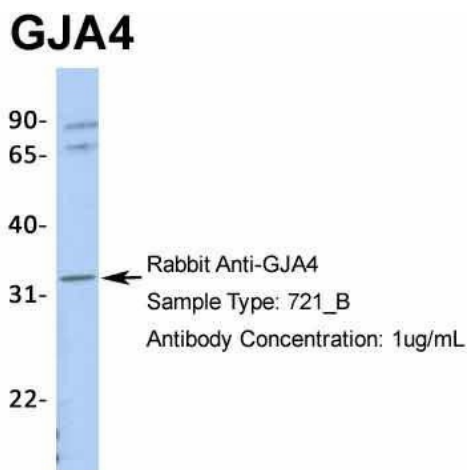
Note: Immunogen Sequence Homology: Human: 100%; Rabbit: 100%; Dog: 93%; Sheep: 93%; Bovine: 93%; Pig: 86%; Rat: 86%; Guinea pig: 86%; Horse: 79%; Mouse: 79%

Protein Families: Ion Channels: Other, Transmembrane

Product images:

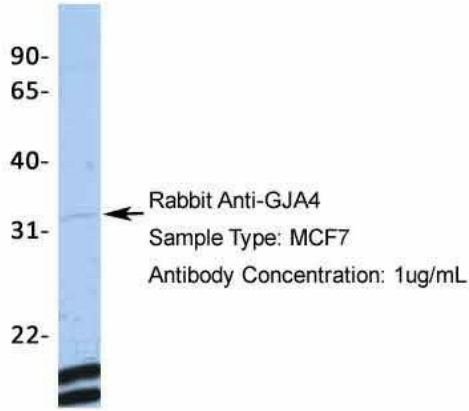


Host: Rabbit; Target Name: GJA4; Sample Tissue: HeLa; Antibody Dilution: 1.0 ug/ml



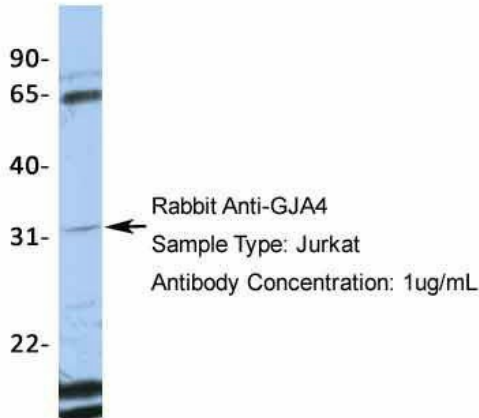
Host: Rabbit; Target Name: GJA4; Sample Tissue: 721_B; Antibody Dilution: 1.0 ug/ml

GJA4



Host: Rabbit; Target Name: GJA4; Sample Tissue: MCF7; Antibody Dilution: 1.0 ug/ml

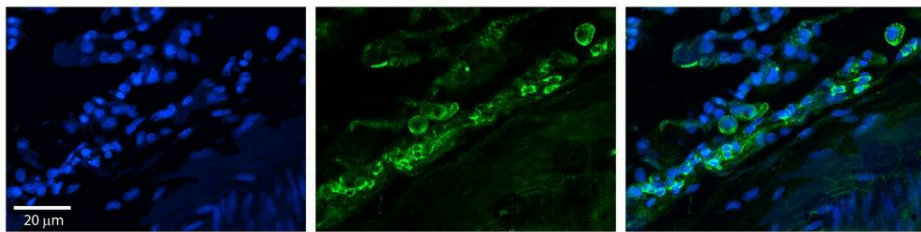
GJA4



Host: Rabbit; Target Name: GJA4; Sample Tissue: Jurkat; Antibody Dilution: 1.0 ug/ml



WB Suggested Anti-GJA4 Antibody Titration: 0.2-1 ug/ml; ELISA Titer: 1:1562500; Positive Control: 721_B cell lysate GJA4 is strongly supported by BioGPS gene expression data to be expressed in Human 721_B cells



Rabbit Anti-GJA4 Antibody; Formalin Fixed Paraffin Embedded Tissue: Human Lung Tissue; Observed Staining: Membrane in alveolar type I cells and macrophages; Primary Antibody Concentration: 1:100; Other Working Concentrations: 1/600; Secondary Antibody: D