

Product datasheet for TA341661

GJB1 Rabbit Polyclonal Antibody

Product data:

Product Type:	Primary Antibodies
Applications:	IHC, WB
Recommended Dilution:	WB, IHC
Reactivity:	Human, Mouse
Host:	Rabbit
Isotype:	IgG
Clonality:	Polyclonal
Immunogen:	The immunogen for anti-GJB1 antibody: synthetic peptide directed towards the C terminal of human GJB1. Synthetic peptide located within the following region: GFGHRLSPEYKQNEINKLLSEQDGLKIDILRRSPGTGAGLAEKSDRCSAC
Formulation:	Liquid. Purified antibody supplied in 1x PBS buffer with 0.09% (w/v) sodium azide and 2% sucrose. <i>Note that this product is shipped as lyophilized powder to China customers.</i>
Concentration:	lot specific
Conjugation:	Unconjugated
Storage:	Store at -20°C as received.
Stability:	Stable for 12 months from date of receipt.
Predicted Protein Size:	31 kDa
Gene Name:	gap junction protein beta 1
Database Link:	NP_000157 Entrez Gene 14618 Mouse Entrez Gene 2705 Human P08034



[View online »](#)

Background:

This gene encodes a member of the gap junction protein family. The gap junction proteins are membrane-spanning proteins that assemble to form gap junction channels that facilitate the transfer of ions and small molecules between cells. According to sequence similarities at the nucleotide and amino acid levels, the gap junction proteins are divided into two categories, alpha and beta. Mutations in this gene cause X-linked Charcot-Marie-Tooth disease, an inherited peripheral neuropathy. Alternatively spliced transcript variants encoding the same protein have been found for this gene. [provided by RefSeq, Oct 2008]

Synonyms:

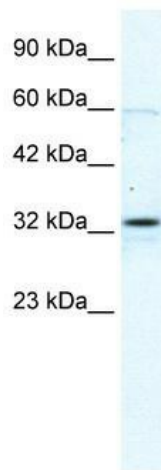
CMTX; CMTX1; CX32

Note:

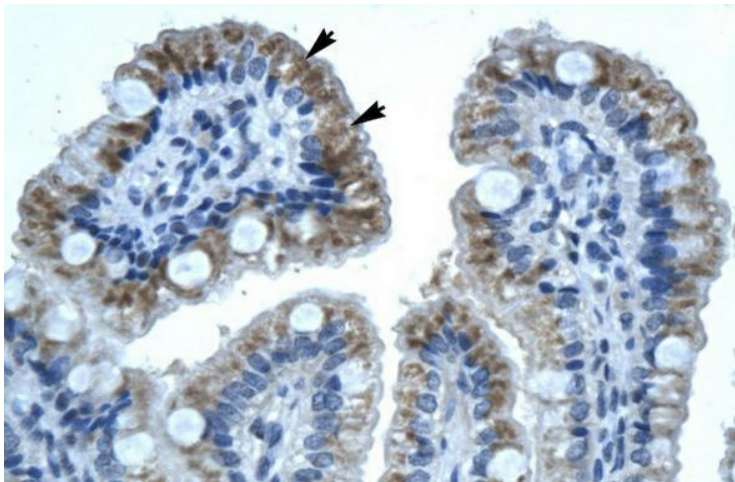
Immunogen Sequence Homology: Dog: 100%; Pig: 100%; Rat: 100%; Horse: 100%; Human: 100%; Mouse: 100%; Bovine: 100%; Rabbit: 100%; Guinea pig: 100%

Protein Families:

Druggable Genome, Ion Channels: Other, Transmembrane

Product images:


WB Suggested Anti-GJB1 Antibody Titration: 2.5 ug/ml; ELISA Titer: 1:312500; Positive Control: Jurkat cell lysate



Human Intestine