

Product datasheet for **TA341658**

Annexin A13 (ANXA13) Rabbit Polyclonal Antibody

Product data:

Product Type:	Primary Antibodies
Applications:	WB
Recommended Dilution:	WB
Reactivity:	Human
Host:	Rabbit
Isotype:	IgG
Clonality:	Polyclonal
Immunogen:	The immunogen for anti-ANXA13 antibody: synthetic peptide directed towards the N terminal of human ANXA13. Synthetic peptide located within the following region: EPEAPQPAKASSPQGFVDVDRDAKLNKACKGMGTNEAAIIEILSGRTSDE
Formulation:	Liquid. Purified antibody supplied in 1x PBS buffer with 0.09% (w/v) sodium azide and 2% sucrose. <i>Note that this product is shipped as lyophilized powder to China customers.</i>
Concentration:	lot specific
Conjugation:	Unconjugated
Storage:	Store at -20°C as received.
Stability:	Stable for 12 months from date of receipt.
Predicted Protein Size:	39 kDa
Gene Name:	annexin A13
Database Link:	NP_001003954 Entrez Gene 312 Human P27216
Background:	This gene encodes a member of the annexin family. Members of this calcium-dependent phospholipid-binding protein family play a role in the regulation of cellular growth and in signal transduction pathways. The specific function of this gene has not yet been determined; however, it is associated with the plasma membrane of undifferentiated, proliferating endothelial cells and differentiated villus enterocytes. Alternatively spliced transcript variants encoding different isoforms have been identified. [provided by RefSeq, Jul 2008]

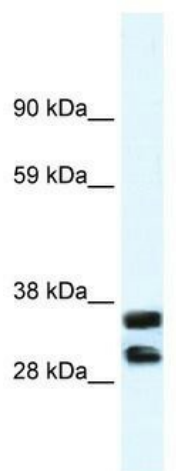


[View online »](#)

Synonyms: ANX13; ISA

Note: Immunogen Sequence Homology: Pig: 100%; Human: 100%; Guinea pig: 92%; Horse: 85%; Rabbit: 85%; Rat: 82%; Mouse: 82%; Dog: 77%

Product images:



WB Suggested Anti-ANXA13 Antibody Titration:
1.25 ug/ml; ELISA Titer: 1:312500; Positive
Control: Human Small Intestine