

## Product datasheet for **TA341657**

### Annexin A13 (ANXA13) Rabbit Polyclonal Antibody

#### Product data:

Product Type:	Primary Antibodies
Applications:	WB
Recommended Dilution:	WB
Reactivity:	Human
Host:	Rabbit
Isotype:	IgG
Clonality:	Polyclonal
Immunogen:	The immunogen for anti-ANXA13 antibody: synthetic peptide directed towards the N terminal of human ANXA13. Synthetic peptide located within the following region: KKLNKACKGMGTNEAAIIEILSGRTSDERQKQKQKATYGKELEEVLKS
Formulation:	Liquid. Purified antibody supplied in 1x PBS buffer with 0.09% (w/v) sodium azide and 2% sucrose. <i>Note that this product is shipped as lyophilized powder to China customers.</i>
Concentration:	lot specific
Conjugation:	Unconjugated
Storage:	Store at -20°C as received.
Stability:	Stable for 12 months from date of receipt.
Predicted Protein Size:	39 kDa
Gene Name:	annexin A13
Database Link:	<a href="#">NP_001003954</a> <a href="#">Entrez Gene 312 Human</a> <a href="#">P27216</a>
Background:	This gene encodes a member of the annexin family. Members of this calcium-dependent phospholipid-binding protein family play a role in the regulation of cellular growth and in signal transduction pathways. The specific function of this gene has not yet been determined; however, it is associated with the plasma membrane of undifferentiated, proliferating endothelial cells and differentiated villus enterocytes. Alternatively spliced transcript variants encoding different isoforms have been identified. [provided by RefSeq, Jul 2008]

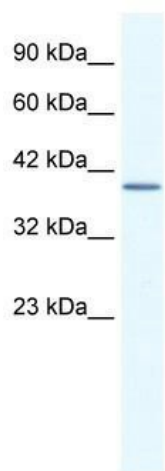


[View online »](#)

**Synonyms:** ANX13; ISA

**Note:** Immunogen Sequence Homology: Dog: 100%; Pig: 100%; Human: 100%; Guinea pig: 100%; Horse: 92%; Mouse: 92%; Rat: 83%; Rabbit: 83%; Bovine: 79%

**Product images:**



WB Suggested Anti-ANXA13 Antibody Titration:  
2.5 ug/ml; ELISA Titer: 1:1562500; Positive  
Control: Jurkat cell lysate