

## Product datasheet for **TA341656**

### Annexin A2 (ANXA2) Rabbit Polyclonal Antibody

#### Product data:

Product Type:	Primary Antibodies
Applications:	WB
Recommended Dilution:	WB
Reactivity:	Human, Mouse
Host:	Rabbit
Isotype:	IgG
Clonality:	Polyclonal
Immunogen:	The immunogen for anti-ANXA2 antibody: synthetic peptide directed towards the C terminal of human ANXA2. Synthetic peptide located within the following region: RIMVSRSEVDMLKIRSEFKRKYGKSLYYYIQDTKGDYQKALLYLCGGDD
Formulation:	Liquid. Purified antibody supplied in 1x PBS buffer with 0.09% (w/v) sodium azide and 2% sucrose. <i>Note that this product is shipped as lyophilized powder to China customers.</i>
Concentration:	lot specific
Conjugation:	Unconjugated
Storage:	Store at -20°C as received.
Stability:	Stable for 12 months from date of receipt.
Predicted Protein Size:	37 kDa
Gene Name:	annexin A2
Database Link:	<a href="#">NP_004030</a> <a href="#">Entrez Gene 12306 Mouse</a> <a href="#">Entrez Gene 302 Human</a> <a href="#">P07355</a>

**Background:** This gene encodes a member of the annexin family. Members of this calcium-dependent phospholipid-binding protein family play a role in the regulation of cellular growth and in signal transduction pathways. This protein functions as an autocrine factor which heightens osteoclast formation and bone resorption. This gene has three pseudogenes located on chromosomes 4, 9 and 10, respectively. Multiple alternatively spliced transcript variants encoding different isoforms have been found for this gene. [provided by RefSeq, Jul 2008]



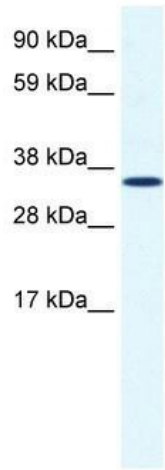
[View online »](#)

**Synonyms:** ANX2; ANX2L4; CAL1H; HEL-S-270; LIP2; LPC2; LPC2D; P36; PAP-IV

**Note:** Immunogen Sequence Homology: Dog: 100%; Pig: 100%; Rat: 100%; Horse: 100%; Human: 100%; Mouse: 100%; Sheep: 100%; Bovine: 100%; Guinea pig: 100%; Rabbit: 93%

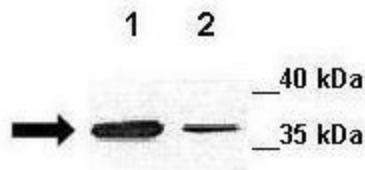
**Protein Families:** Druggable Genome, Secreted Protein, Stem cell - Pluripotency

**Product images:**



**ANXA2**

WB Suggested Anti-ANXA2 Antibody Titration:  
1.25 ug/ml; ELISA Titer: 1:312500; Positive  
Control: Human Lung



Lanes: ; Lane 1: 20ug mouse GL261 cell lysate;  
Lane 2: 20ug mouse astrocyte cell lysate; Primary  
Antibody Dilution: ; 1:250; Secondary Antibody: ;  
Anti-rabbit-HRP; Secondary Antibody Dilution: ;  
1:500; Gene Name: ; ANXA2; Submitted by: ;  
Anonymous;