

Product datasheet for **TA341649**

Annexin A3 (ANXA3) Rabbit Polyclonal Antibody

Product data:

Product Type:	Primary Antibodies
Applications:	IHC, WB
Recommended Dilution:	WB, IHC
Reactivity:	Human
Host:	Rabbit
Isotype:	IgG
Clonality:	Polyclonal
Immunogen:	The immunogen for anti-ANXA3 antibody: synthetic peptide directed towards the N terminal of human ANXA3. Synthetic peptide located within the following region: MASIWVGHRGTVRDYPDFSPVDAEAIQKAIRGIGTDEKMLISILTERSN
Formulation:	Liquid. Purified antibody supplied in 1x PBS buffer with 0.09% (w/v) sodium azide and 2% sucrose. <i>Note that this product is shipped as lyophilized powder to China customers.</i>
Concentration:	lot specific
Conjugation:	Unconjugated
Storage:	Store at -20°C as received.
Stability:	Stable for 12 months from date of receipt.
Predicted Protein Size:	36 kDa
Gene Name:	annexin A3
Database Link:	NP_005130 Entrez Gene 306 Human P12429
Background:	This gene encodes a member of the annexin family. Members of this calcium-dependent phospholipid-binding protein family play a role in the regulation of cellular growth and in signal transduction pathways. This protein functions in the inhibition of phospholipase A2 and cleavage of inositol 1,2-cyclic phosphate to form inositol 1-phosphate. This protein may also play a role in anti-coagulation. [provided by RefSeq, Jul 2008]
Synonyms:	ANX3

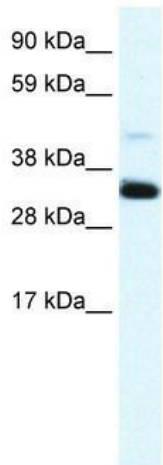


[View online »](#)

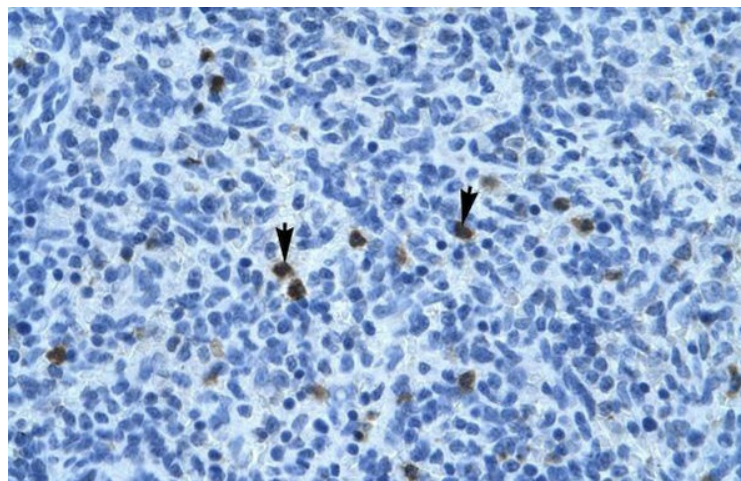
Note: Immunogen Sequence Homology: Human: 100%; Rabbit: 93%; Horse: 86%; Dog: 79%; Pig: 79%; Rat: 79%; Mouse: 79%; Guinea pig: 79%

Protein Families: Stem cell - Pluripotency

Product images:



WB Suggested Anti-ANXA3 Antibody Titration:
1.25 ug/ml; ELISA Titer: 1:62500; Positive Control:
Human Placenta



Human Spleen