

Product datasheet for **TA341647**

ANXA8L1 Rabbit Polyclonal Antibody

Product data:

Product Type:	Primary Antibodies
Applications:	WB
Recommended Dilution:	WB
Reactivity:	Human
Host:	Rabbit
Isotype:	IgG
Clonality:	Polyclonal
Immunogen:	The immunogen for anti-ANXA8L2 antibody: synthetic peptide directed towards the middle region of human ANXA8L2. Synthetic peptide located within the following region: VFEEYEKIANKSIEDSIKSETHGSLEEAMLTVVKCTQNLHSYFAERLYYA
Formulation:	Liquid. Purified antibody supplied in 1x PBS buffer with 0.09% (w/v) sodium azide and 2% sucrose.
Concentration:	lot specific
Conjugation:	Unconjugated
Storage:	Store at -20°C as received.
Stability:	Stable for 12 months from date of receipt.
Predicted Protein Size:	37 kDa
Gene Name:	annexin A8-like 1
Database Link:	NP_001621 Entrez Gene 244 Entrez Gene 728113 Human Q5VT79



[View online »](#)

Background:

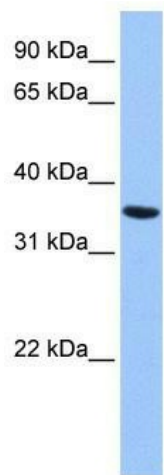
ANXA8L2 is a member of the annexin family of evolutionarily conserved Ca²⁺ and phospholipid binding proteins. The protein may function as an anticoagulant that indirectly inhibits the thromboplastin-specific complex. Overexpression of this gene has been associated with acute myelocytic leukemia. A highly similar duplicated copy of this gene is found in close proximity on the long arm of chromosome 10. This gene encodes a member of the annexin family of evolutionarily conserved Ca²⁺ and phospholipid binding proteins. The encoded protein may function as an anticoagulant that indirectly inhibits the thromboplastin-specific complex. Overexpression of this gene has been associated with acute myelocytic leukemia. A highly similar duplicated copy of this gene is found in close proximity on the long arm of chromosome 10.

Synonyms:

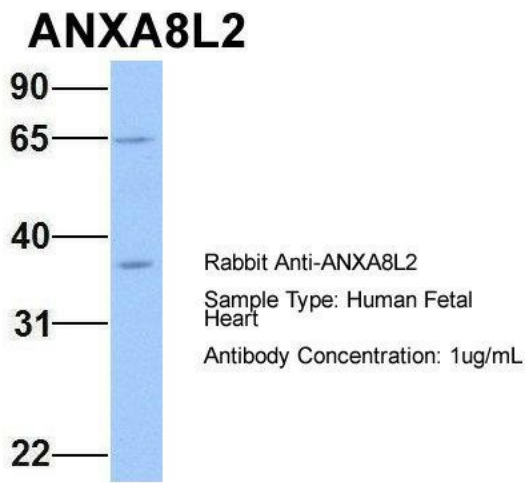
ANXA8; bA145E20.2

Note:

Immunogen Sequence Homology: Pig: 100%; Rat: 100%; Horse: 100%; Human: 100%; Bovine: 100%; Rabbit: 100%; Mouse: 93%; Dog: 86%; Zebrafish: 86%; Guinea pig: 86%

Product images:

WB Suggested Anti-ANXA8L2 Antibody Titration:
0.2-1 ug/ml; ELISA Titer: 1:1562500; Positive
Control: HepG2 cell lysate



Host: Rabbit; Target Name: ANXA8L2; Sample Tissue: Human Fetal Heart; Antibody Dilution: 1.0 ug/ml