

Product datasheet for **TA341644**

Annexin A1 (ANXA1) Rabbit Polyclonal Antibody

Product data:

Product Type:	Primary Antibodies
Applications:	IHC, WB
Recommended Dilution:	WB, IHC
Reactivity:	Human, Mouse
Host:	Rabbit
Isotype:	IgG
Clonality:	Polyclonal
Immunogen:	The immunogen for anti-ANXA1 antibody: synthetic peptide directed towards the N terminal of human ANXA1. Synthetic peptide located within the following region: WFIENEEQEYVQTVKSSKGGPGSAVSPYPTFNPSSDVAALHKAIMVKGVD
Formulation:	Liquid. Purified antibody supplied in 1x PBS buffer with 0.09% (w/v) sodium azide and 2% sucrose. <i>Note that this product is shipped as lyophilized powder to China customers.</i>
Concentration:	lot specific
Conjugation:	Unconjugated
Storage:	Store at -20°C as received.
Stability:	Stable for 12 months from date of receipt.
Predicted Protein Size:	38 kDa
Gene Name:	annexin A1
Database Link:	NP_000691 Entrez Gene 16952 Mouse Entrez Gene 301 Human P04083



[View online »](#)

Background:

Annexin I belongs to a family of Ca²⁺-dependent phospholipid binding proteins which have a molecular weight of approximately 35,000 to 40,000 and are preferentially located on the cytosolic face of the plasma membrane. Annexin I protein has an apparent relative molecular mass of 40 kDa, with phospholipase A2 inhibitory activity. Since phospholipase A2 is required for the biosynthesis of the potent mediators of inflammation, prostaglandins and leukotrienes, annexin I may have potential anti-inflammatory activity. [provided by RefSeq, Jul 2008]

Synonyms:

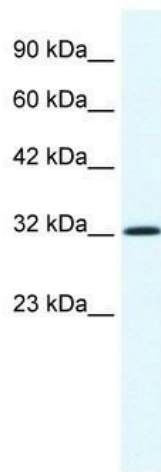
ANX1; LPC1

Note:

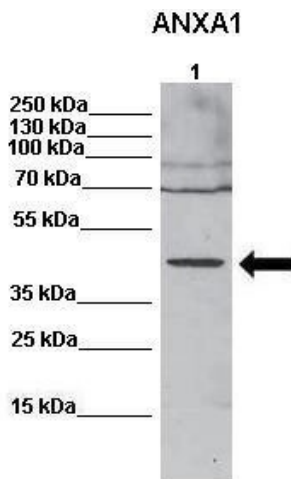
Immunogen Sequence Homology: Human: 100%; Mouse: 83%; Rat: 82%; Dog: 79%; Pig: 79%; Bovine: 79%; Guinea pig: 79%

Protein Families:

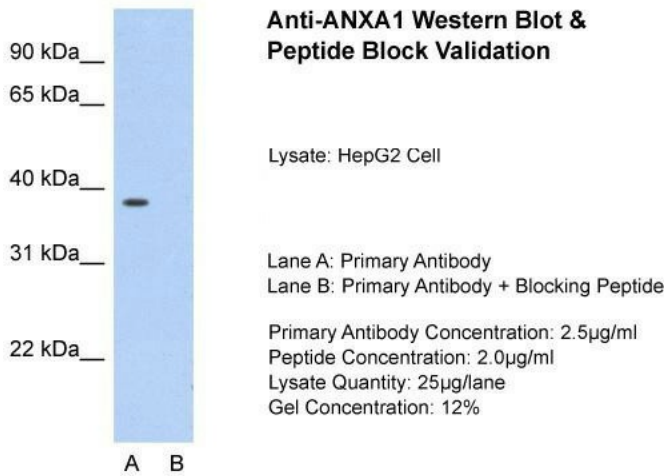
Druggable Genome

Product images:


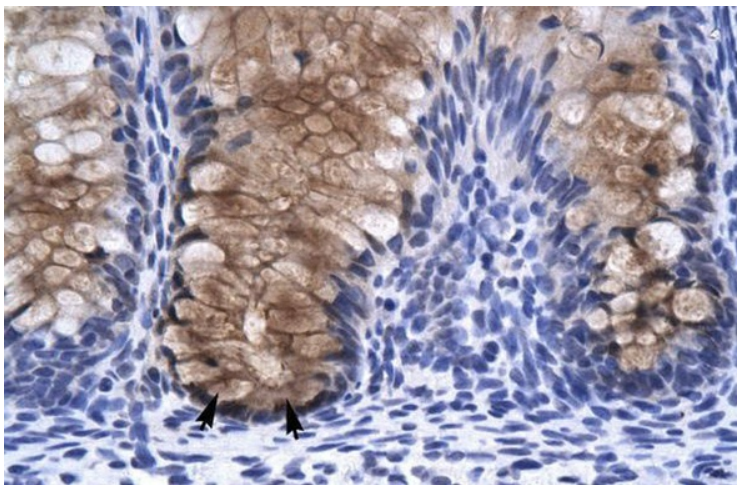
WB Suggested Anti-ANXA1 Antibody Titration:
1.25 ug/ml; ELISA Titer: 1:62500; Positive Control:
HepG2 cell lysate



WB Suggested Anti-ANXA1 Antibody ; Positive Control: Lane 1: 20ug mouse fibroblast lysates; Primary Antibody Dilution : 1:600; Secondary Antibody : Anti rabbit-HRP; Secondary Antibody Dilution : 1:2000; Submitted by: Anonymous



Host: Rabbit; Target Name: ANXA1; Sample Tissue: HepG2; Lane A: Primary Antibody; Lane B: Primary Antibody + Blocking Peptide ; Primary Antibody Concentration:2.5ug/mL; Peptide Concentration: 2.0ug/mL; Lysate Quantity: 25ug/lane; Gel Concentration: 12%



Human Intestine