

## Product datasheet for **TA341643**

### Nucleobindin 2 (NUCB2) Rabbit Polyclonal Antibody

#### Product data:

Product Type:	Primary Antibodies
Applications:	IHC, WB
Recommended Dilution:	WB, IHC
Reactivity:	Human, Mouse, Canine
Host:	Rabbit
Isotype:	IgG
Clonality:	Polyclonal
Immunogen:	The immunogen for anti-NUCB2 antibody: synthetic peptide directed towards the middle region of human NUCB2. Synthetic peptide located within the following region: MMKEHERREYLKTLNEEKRKEEESKFEEMKKKHENHHPKVNHPGSKDQLKE
Formulation:	Liquid. Purified antibody supplied in 1x PBS buffer with 0.09% (w/v) sodium azide and 2% sucrose. <i>Note that this product is shipped as lyophilized powder to China customers.</i>
Concentration:	lot specific
Conjugation:	Unconjugated
Storage:	Store at -20°C as received.
Stability:	Stable for 12 months from date of receipt.
Predicted Protein Size:	46 kDa
Gene Name:	nucleobindin 2
Database Link:	<a href="#">NP_005004</a> <a href="#">Entrez Gene 53322 Mouse</a> <a href="#">Entrez Gene 4925 Human</a> <a href="#">P80303</a>
Background:	This gene encodes a protein with a suggested role in calcium level maintenance, eating regulation inThe hypothalamus, and release of tumor necrosis factor from vascular endothelial cells.This protein binds calcium and has EF-folding domains. [provided by RefSeq, Oct 2011]
Synonyms:	HEL-S-109; NEFA

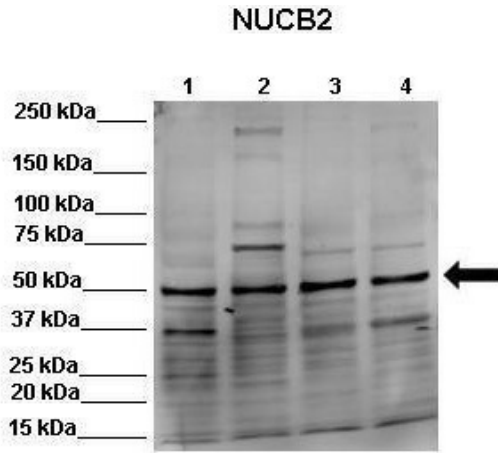


[View online »](#)

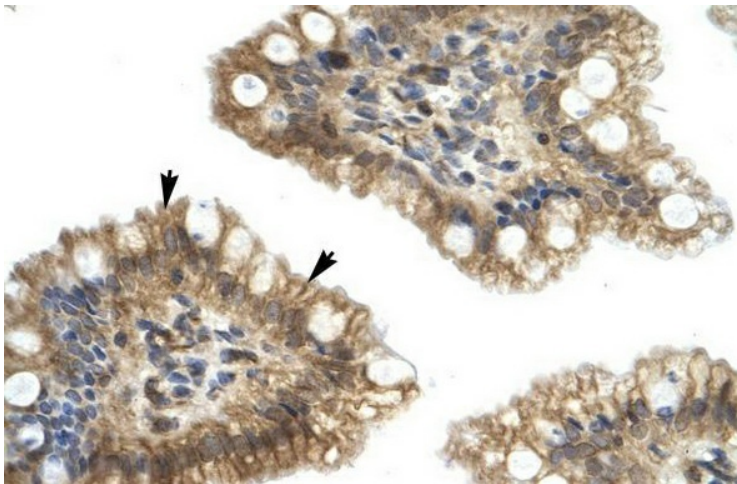
**Note:** Immunogen Sequence Homology: Dog: 100%; Pig: 100%; Horse: 100%; Human: 100%; Rat: 93%; Mouse: 93%; Bovine: 93%; Rabbit: 93%; Yeast: 91%; Guinea pig: 86%

**Protein Families:** Secreted Protein, Transmembrane

**Product images:**



Lanes: Lane 1: 50ug HEK293 lysate; Lane 2: 50ug MDCK lysate; Lane 3: 50ug NMuMG lysate; Lane 4: 50ug MDAMB231 lysate; Primary Antibody Dilution: ; 1:1000; Secondary Antibody: ; Goat anti-rabbit-Alexa Fluor 680; Secondary Antibody Dilution: ; 1:10,000; Gen



Human Intestine