

Product datasheet for TA341642

Nucleobindin 2 (NUCB2) Rabbit Polyclonal Antibody

Product data:

| | |
|-------------------------|--|
| Product Type: | Primary Antibodies |
| Applications: | WB |
| Recommended Dilution: | WB |
| Reactivity: | Human |
| Host: | Rabbit |
| Isotype: | IgG |
| Clonality: | Polyclonal |
| Immunogen: | The immunogen for anti-NUCB2 antibody: synthetic peptide directed towards the C terminal of human NUCB2. Synthetic peptide located within the following region: FFTEEELKEYENIIALQENELKKKADELQKQKEELQRQHDQLEAQKLEYH |
| Formulation: | Liquid. Purified antibody supplied in 1x PBS buffer with 0.09% (w/v) sodium azide and 2% sucrose. <i>Note that this product is shipped as lyophilized powder to China customers.</i> |
| Concentration: | lot specific |
| Conjugation: | Unconjugated |
| Storage: | Store at -20°C as received. |
| Stability: | Stable for 12 months from date of receipt. |
| Predicted Protein Size: | 46 kDa |
| Gene Name: | nucleobindin 2 |
| Database Link: | NP_005004 Entrez Gene 4925 Human P80303 |
| Background: | This gene encodes a protein with a suggested role in calcium level maintenance, eating regulation inThe hypothalamus, and release of tumor necrosis factor from vascular endothelial cells.This protein binds calcium and has EF-folding domains. [provided by RefSeq, Oct 2011] |
| Synonyms: | HEL-S-109; NEFA |

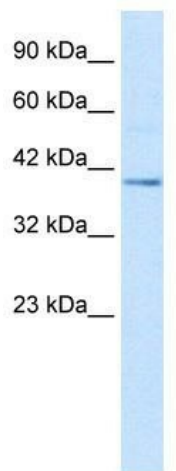


[View online »](#)

Note: Immunogen Sequence Homology: Dog: 100%; Pig: 100%; Rat: 100%; Horse: 100%; Human: 100%; Bovine: 100%; Rabbit: 100%; Guinea pig: 93%; Mouse: 86%

Protein Families: Secreted Protein, Transmembrane

Product images:



WB Suggested Anti-NUCB2 Antibody Titration: 2.5 ug/ml; ELISA Titer: 1:312500; Positive Control: HepG2 cell lysate