

Product datasheet for **TA341639**

ATF3 Rabbit Polyclonal Antibody

Product data:

Product Type:	Primary Antibodies
Applications:	WB
Recommended Dilution:	WB
Reactivity:	Human
Host:	Rabbit
Isotype:	IgG
Clonality:	Polyclonal
Immunogen:	The immunogen for anti-ATF3 antibody: synthetic peptide directed towards the middle region of human ATF3. Synthetic peptide located within the following region: PLGVSITKAEVAPEEDERKKRRRERNKIAAAKCRNKKKEKTECLQKESEK
Formulation:	Liquid. Purified antibody supplied in 1x PBS buffer with 0.09% (w/v) sodium azide and 2% sucrose. <i>Note that this product is shipped as lyophilized powder to China customers.</i>
Concentration:	lot specific
Conjugation:	Unconjugated
Storage:	Store at -20°C as received.
Stability:	Stable for 12 months from date of receipt.
Predicted Protein Size:	20 kDa
Gene Name:	activating transcription factor 3
Database Link:	NP_001665 Entrez Gene 467 Human P18847



[View online »](#)

Background:

This gene encodes a member of the mammalian activation transcription factor/cAMP responsive element-binding (CREB) protein family of transcription factors. This gene is induced by a variety of signals, including many of those encountered by cancer cells, and is involved in the complex process of cellular stress response. Multiple transcript variants encoding different isoforms have been found for this gene. It is possible that alternative splicing of this gene may be physiologically important in the regulation of target genes. [provided by RefSeq, Apr 2011]

Synonyms:

FLJ41705

Note:

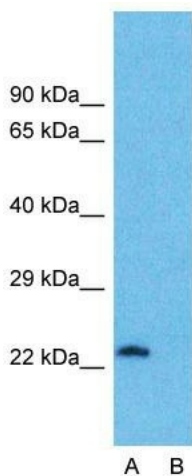
Immunogen Sequence Homology: Dog: 100%; Pig: 100%; Horse: 100%; Human: 100%; Bovine: 100%; Guinea pig: 100%; Rat: 93%; Rabbit: 93%; Mouse: 86%; Zebrafish: 80%; Yeast: 75%

Protein Families:

Transcription Factors

Product images:


WB Suggested Anti-ATF3 Antibody Titration: 0.2-1 ug/ml; ELISA Titer: 1:312500; Positive Control: OVCAR-3 cell lysate


Anti-ATF3 Western Blot & Peptide Block Validation

Lot Number: QC5438

Lysate: OVCAR-3 Cell

Lane A: Primary Antibody
Lane B: Primary Antibody + Blocking Peptide

Primary Antibody Concentration: 1.0 µg/ml
Peptide Concentration: 5.0 µg/ml
Lysate Quantity: 25 µg/lane
Gel Concentration: 12%

Host: Rabbit; Target Name: ATF3; Sample Tissue: OVCAR-3; Lane A: Primary Antibody; Lane B: Primary Antibody + Blocking Peptide; Primary Antibody Concentration: 1 µg/ml; Peptide Concentration: 5 µg/ml; Lysate Quantity: 25 µg/lane/lane; Gel Concentration: 0.12