

Product datasheet for TA341638

Amino terminal enhancer of split (AES) Rabbit Polyclonal Antibody

Product data:

Product Type:	Primary Antibodies
Applications:	WB
Recommended Dilution:	WB
Reactivity:	Human
Host:	Rabbit
Isotype:	IgG
Clonality:	Polyclonal
Immunogen:	The immunogen for anti-AES antibody: synthetic peptide directed towards the C terminal of human AES. Synthetic peptide located within the following region: GLQPPSLPAVSAGTGLLSLSALGSQLHLSKEDKNGHGDGDTHQEDDGEKSD
Formulation:	Liquid. Purified antibody supplied in 1x PBS buffer with 0.09% (w/v) sodium azide and 2% sucrose. <i>Note that this product is shipped as lyophilized powder to China customers.</i>
Concentration:	lot specific
Conjugation:	Unconjugated
Storage:	Store at -20°C as received.
Stability:	Stable for 12 months from date of receipt.
Predicted Protein Size:	22 kDa
Gene Name:	amino-terminal enhancer of split
Database Link:	NP_001121 Entrez Gene 166 Human Q08117
Background:	The protein encoded by this gene is similar in sequence to the amino terminus of Drosophila enhancer of split groucho, a protein involved in neurogenesis during embryonic development. The encoded protein, which belongs to the groucho/TLE family of proteins, can function as a homooligomer or as a heterooligomer with other family members to dominantly repress the expression of other family member genes. Three transcript variants encoding different isoforms have been found for this gene. [provided by RefSeq, Jul 2008]



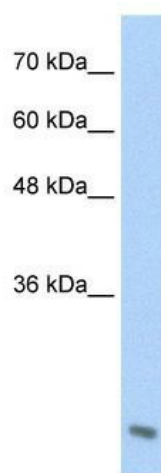
[View online »](#)

Synonyms: AES-1; AES-2; ESP1; GRG; Grg-5; GRG5; TLE5

Note: Immunogen Sequence Homology: Pig: 100%; Rat: 100%; Human: 100%; Mouse: 100%; Bovine: 100%; Guinea pig: 100%

Protein Families: Druggable Genome, Transcription Factors

Product images:



WB Suggested Anti-AES Antibody Titration: 2.5 ug/ml; Positive Control: Jurkat cell lysate AES is supported by BioGPS gene expression data to be expressed in Jurkat