

Product datasheet for **TA341637**

beta 1 Adrenergic Receptor (ADRB1) Rabbit Polyclonal Antibody

Product data:

Product Type:	Primary Antibodies
Applications:	WB
Recommended Dilution:	WB
Reactivity:	Human, Mouse
Host:	Rabbit
Isotype:	IgG
Clonality:	Polyclonal
Immunogen:	The immunogen for anti-ADRB1 antibody: synthetic peptide directed towards the middle region of human ADRB1. Synthetic peptide located within the following region: CTVWAI SALV SFLPILMHWWRAESDEARRCYNDPKCCDFVTNRAYAIASS
Formulation:	Liquid. Purified antibody supplied in 1x PBS buffer with 0.09% (w/v) sodium azide and 2% sucrose. <i>Note that this product is shipped as lyophilized powder to China customers.</i>
Concentration:	lot specific
Conjugation:	Unconjugated
Storage:	Store at -20°C as received.
Stability:	Stable for 12 months from date of receipt.
Predicted Protein Size:	51 kDa
Gene Name:	adrenoceptor beta 1
Database Link:	NP_000675 Entrez Gene 11554 Mouse Entrez Gene 153 Human P08588
Background:	The adrenergic receptors (subtypes alpha 1, alpha 2, beta 1, and beta 2) are a prototypic family of guanine nucleotide binding regulatory protein-coupled receptors that mediate the physiological effects of the hormone epinephrine and the neurotransmitter norepinephrine. Specific polymorphisms in this gene have been shown to affect the resting heart rate and can be involved in heart failure. [provided by RefSeq, Jul 2008]
Synonyms:	ADRB1R; B1AR; BETA1AR; RHR



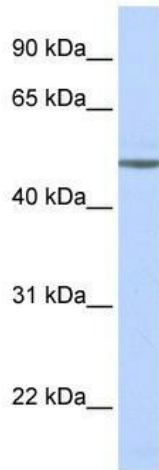
[View online »](#)

Note: Immunogen Sequence Homology: Pig: 100%; Rat: 100%; Human: 100%; Mouse: 100%; Rabbit: 93%; Guinea pig: 93%; Dog: 87%

Protein Families: Druggable Genome, GPCR, Transmembrane

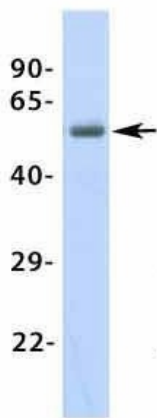
Protein Pathways: Calcium signaling pathway, Dilated cardiomyopathy, Endocytosis, Gap junction, Neuroactive ligand-receptor interaction

Product images:



WB Suggested Anti-ADRB1 Antibody Titration: 0.2-1 ug/ml; ELISA Titer: 1:312500; Positive Control: Human brain

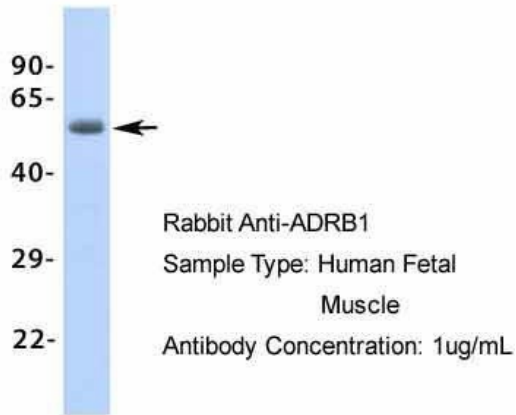
ADRB1



Rabbit Anti-ADRB1
 Sample Type: Human Adult Placenta
 Antibody Concentration: 1ug/mL

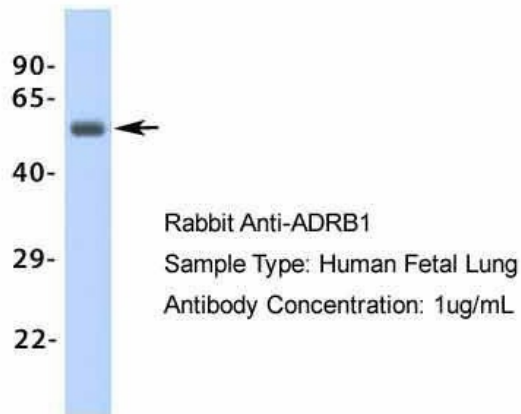
Host: Rabbit; Target Name: ADRB1; Sample Tissue: Human Adult Placenta; Antibody Dilution: 1.0 ug/ml

ADRB1



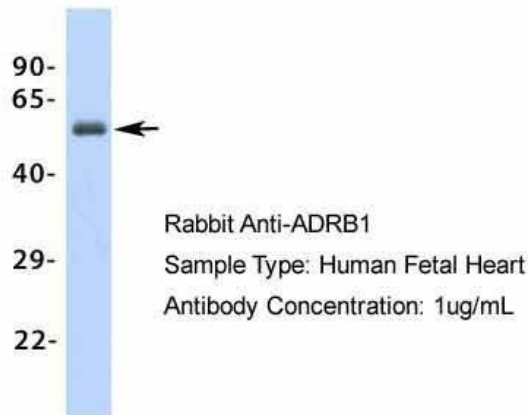
Host: Rabbit; Target Name: ADRB1; Sample Tissue: Human Fetal Muscle; Antibody Dilution: 1.0 µg/ml

ADRB1

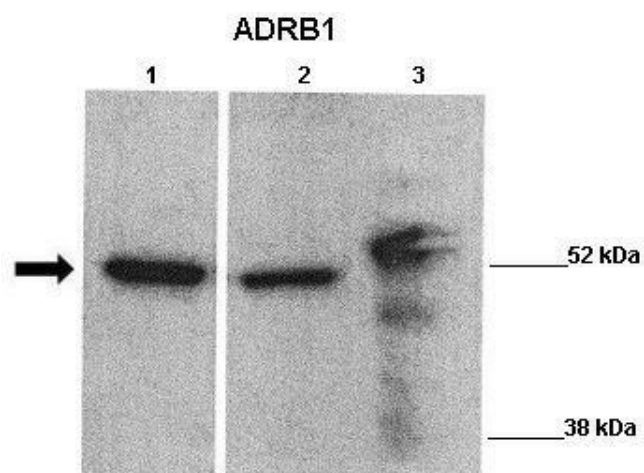


Host: Rabbit; Target Name: ADRB1; Sample Tissue: Human Fetal Lung; Antibody Dilution: 1.0 µg/ml

ADRB1



Host: Rabbit; Target Name: ADRB1; Sample Tissue: Human Fetal Heart; Antibody Dilution: 1.0 µg/ml



WB Suggested Anti-ADRB1 Antibody ; Positive Control: Lane 1: 20ug Wild type mouse, left ventricle Lane 2: 20ug Transgenic mouse, treated with experimental drug, left ventricle Lane 3: 20ug HepG2 lysate; Primary Antibody Dilution : 1:1000; Secondary Antib