

## Product datasheet for **TA341636**

### DNA2 Rabbit Polyclonal Antibody

#### Product data:

Product Type:	Primary Antibodies
Applications:	WB
Recommended Dilution:	WB
Reactivity:	Human
Host:	Rabbit
Isotype:	IgG
Clonality:	Polyclonal
Immunogen:	The immunogen for anti-DNA2L antibody: synthetic peptide directed towards the middle region of human DNA2L. Synthetic peptide located within the following region: KLELEFYADYSDNPWLMGVFEPNNPVCFLNTDKVPAPPEQVEKGGVSNVTE
Formulation:	Liquid. Purified antibody supplied in 1x PBS buffer with 0.09% (w/v) sodium azide and 2% sucrose. <i>Note that this product is shipped as lyophilized powder to China customers.</i>
Concentration:	lot specific
Conjugation:	Unconjugated
Storage:	Store at -20°C as received.
Stability:	Stable for 12 months from date of receipt.
Predicted Protein Size:	54 kDa
Gene Name:	DNA replication helicase/nuclease 2
Database Link:	<a href="#">NP_001073918</a> <a href="#">Entrez Gene 1763 Human</a> <a href="#">P51530</a>



[View online »](#)

**Background:**

DNA2 is a conserved helicase/nuclease involved inThe maintenance of mitochondrial and nuclear DNA stability (Duxin et al., 2009 [PubMed 19487465]). [supplied by OMIM, Nov 2010].  
Transcript Variant:This variant (1) representsThe longer transcript and encodesThe functional protein. CCDS Note:The coding region has been updated to shortenThe N-terminus to one that is more supported byThe available transcript, conservation and publication data.  
Publication Note:This RefSeq record includes a subset ofThe publications that are available forThis gene. Please seeThe Gene record to access additional publications. ##Evidence-Data-START## Transcript exon combination :: D42046.1 [ECO:0000332] RNAseq introns :: mixed/partial sample support ERS025081, ERS025082 [ECO:0000350] ##Evidence-Data-END## COMPLETENESS: complete onThe 3' end.

**Synonyms:**

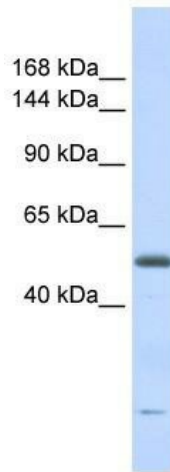
DNA2L; hDNA2

**Note:**

Immunogen Sequence Homology: Human: 100%; Dog: 93%; Pig: 93%; Mouse: 93%; Bovine: 92%; Rat: 86%; Horse: 86%; Rabbit: 85%; Guinea pig: 85%

**Protein Pathways:**

DNA replication

**Product images:**

WB Suggested Anti-DNA2L Antibody Titration:  
0.2-1 ug/ml; ELISA Titer: 1:312500; Positive  
Control: Human heart