

## Product datasheet for **TA341635**

### DHX57 Rabbit Polyclonal Antibody

#### Product data:

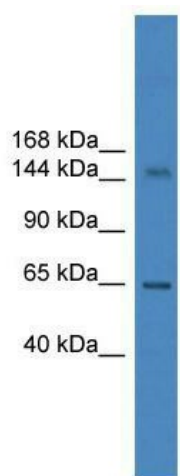
Product Type:	Primary Antibodies
Applications:	WB
Recommended Dilution:	WB
Reactivity:	Human
Host:	Rabbit
Isotype:	IgG
Clonality:	Polyclonal
Immunogen:	The immunogen for anti-DHX57 antibody: synthetic peptide directed towards the C terminal of human DHX57. Synthetic peptide located within the following region: LSGRVLQEMASLKRQFTELLSDIGFAREGLRAREIEKRAQGQGDGVLDATG
Formulation:	Liquid. Purified antibody supplied in 1x PBS buffer with 0.09% (w/v) sodium azide and 2% sucrose. <i>Note that this product is shipped as lyophilized powder to China customers.</i>
Concentration:	lot specific
Purification:	Affinity Purified
Conjugation:	Unconjugated
Storage:	Store at -20°C as received.
Stability:	Stable for 12 months from date of receipt.
Predicted Protein Size:	155 kDa
Gene Name:	DEAH-box helicase 57
Database Link:	<a href="#">NP_945314</a> <a href="#">Entrez Gene 90957 Human</a> <a href="#">Q6P158</a>
Background:	Probable ATP-binding RNA helicase.
Synonyms:	DDX57
Note:	Immunogen Sequence Homology: Pig: 100%; Rat: 100%; Human: 100%; Mouse: 100%; Rabbit: 100%; Guinea pig: 100%; Dog: 93%; Bovine: 87%; Horse: 79%



[View online »](#)

Protein Families: Druggable Genome

## Product images:



WB Suggested Anti-DHX57 Antibody Titration:  
0.2-1 ug/ml; ELISA Titer: 1:312500; Positive  
Control: HepG2 cell lysate DHX57 is supported by  
BioGPS gene expression data to be expressed in  
HepG2