

Product datasheet for **TA341634**

DDX26B (INTS6L) Rabbit Polyclonal Antibody

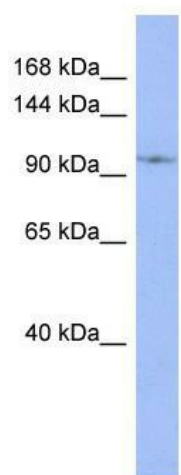
Product data:

Product Type:	Primary Antibodies
Applications:	WB
Recommended Dilution:	WB
Reactivity:	Human
Host:	Rabbit
Isotype:	IgG
Clonality:	Polyclonal
Immunogen:	The immunogen for anti-DDX26B antibody: synthetic peptide directed towards the N terminal of human DDX26B. Synthetic peptide located within the following region: ASTEPEQLGSVPTDESAITQMCEVTGGRSYCVRTQRMLNQCLESLVQKVQ
Formulation:	Liquid. Purified antibody supplied in 1x PBS buffer with 0.09% (w/v) sodium azide and 2% sucrose. <i>Note that this product is shipped as lyophilized powder to China customers.</i>
Concentration:	lot specific
Conjugation:	Unconjugated
Storage:	Store at -20°C as received.
Stability:	Stable for 12 months from date of receipt.
Predicted Protein Size:	97 kDa
Gene Name:	integrator complex subunit 6 like
Database Link:	NP_872346 Entrez Gene 203522 Human Q5JSJ4
Background:	The function of This protein remains unknown.
Synonyms:	DDX26B
Note:	Immunogen Sequence Homology: Dog: 100%; Pig: 100%; Rat: 100%; Horse: 100%; Human: 100%; Rabbit: 100%; Zebrafish: 100%; Guinea pig: 100%; Mouse: 93%; Bovine: 93%



[View online »](#)

Product images:



WB Suggested Anti-DDX26B Antibody Titration:
0.2-1 ug/ml; ELISA Titer: 1:62500; Positive Control:
THP-1 cell lysate