

## Product datasheet for **TA341631**

### **PGBD3 Rabbit Polyclonal Antibody**

#### **Product data:**

Product Type:	Primary Antibodies
Applications:	WB
Recommended Dilution:	WB
Reactivity:	Human
Host:	Rabbit
Isotype:	IgG
Clonality:	Polyclonal
Immunogen:	The immunogen for anti-PGBD3 antibody: synthetic peptide directed towards the N terminal of human PGBD3. Synthetic peptide located within the following region: AESDSDPSYAPKDDSPDEVPSTFTVQPPPSRRRKMTKILCKWKKADLT
Formulation:	Liquid. Purified antibody supplied in 1x PBS buffer with 0.09% (w/v) sodium azide and 2% sucrose. <i>Note that this product is shipped as lyophilized powder to China customers.</i>
Concentration:	lot specific
Conjugation:	Unconjugated
Storage:	Store at -20°C as received.
Stability:	Stable for 12 months from date of receipt.
Predicted Protein Size:	67 kDa
Gene Name:	piggyBac transposable element derived 3
Database Link:	<a href="#">NP_736609</a> <a href="#">Entrez Gene 267004 Human</a> <a href="#">Q8N328</a>



[View online »](#)

**Background:**

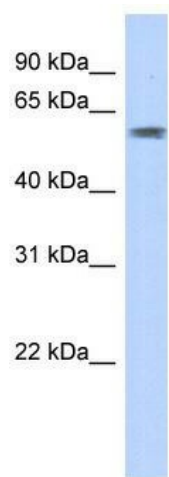
This gene is a member of a small family of genes derived from piggyBac transposable elements. The encoded protein contains a zinc-ribbon domain characteristic of transposon-derived proteins and may function as a regulator of transcription. Naturally-occurring readthrough transcription occurs between this gene and the adjacent ERCC6 gene (GeneID 2074), and results in a fusion protein that shares sequence with the product of each individual gene. The readthrough locus is represented by GeneID:101243544. There are several pseudogenes for this gene on chromosomes 4, 5 and 12. [provided by RefSeq, Mar 2013]

**Synonyms:**

FLJ90201

**Note:**

Immunogen Sequence Homology: Human: 100%

**Product images:**

WB Suggested Anti-PGBD3 Antibody Titration:  
0.2-1 ug/ml; ELISA Titer: 1:62500; Positive Control:  
Transfected 293T