

## Product datasheet for **TA341630**

### TDRD9 Rabbit Polyclonal Antibody

#### Product data:

Product Type:	Primary Antibodies
Applications:	WB
Recommended Dilution:	WB
Reactivity:	Human
Host:	Rabbit
Isotype:	IgG
Clonality:	Polyclonal
Immunogen:	The immunogen for anti-TDRD9 antibody: synthetic peptide directed towards the middle region of human TDRD9. Synthetic peptide located within the following region: AINIRDVLIQQGYAELTEESYESKQSHEVLKGLFSKSVENMTDGSVPFPM
Formulation:	Liquid. Purified antibody supplied in 1x PBS buffer with 0.09% (w/v) sodium azide and 2% sucrose.
Concentration:	lot specific
Conjugation:	Unconjugated
Storage:	Store at -20°C as received.
Stability:	Stable for 12 months from date of receipt.
Predicted Protein Size:	103 kDa
Gene Name:	tudor domain containing 9
Database Link:	<a href="#">NP_694591</a> <a href="#">Entrez Gene 122402 Human</a> <a href="#">Q8NDG6</a>
Background:	Probable ATP-binding RNA helicase which plays a central role during spermatogenesis by repressing transposable elements and preventing their mobilization, which is essential for the germline integrity. Acts via the piRNA metabolic process, which mediates the repression of transposable elements during meiosis by forming complexes composed of piRNAs and Piwi proteins and governs the methylation and subsequent repression of transposons. Its association with PIWIL4 and the piP-bodies suggests a participation in the secondary piRNA metabolic process.

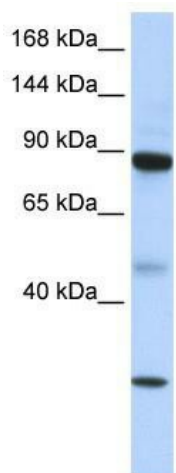


[View online »](#)

**Synonyms:** C14orf75; HIG-1; NET54

**Note:** Immunogen Sequence Homology: Human: 100%; Rabbit: 100%; Rat: 92%; Mouse: 92%; Dog: 85%; Pig: 85%; Horse: 85%; Guinea pig: 85%; Bovine: 77%

**Product images:**



WB Suggested Anti-TDRD9 Antibody Titration:  
0.2-1 ug/ml; ELISA Titer: 1:312500; Positive  
Control: 721\_B cell lysate