

Product datasheet for **TA341628**

DHX30 Rabbit Polyclonal Antibody

Product data:

Product Type:	Primary Antibodies
Applications:	IHC, WB
Recommended Dilution:	WB, IHC
Reactivity:	Human
Host:	Rabbit
Isotype:	IgG
Clonality:	Polyclonal
Immunogen:	The immunogen for anti-DHX30 antibody: synthetic peptide directed towards the N terminal of human DHX30. Synthetic peptide located within the following region: AESGMAPGGPGEGDGLVNASRDLLKEFPQPKNLLNSVIGRALGISHAKD
Formulation:	Liquid. Purified antibody supplied in 1x PBS buffer with 0.09% (w/v) sodium azide and 2% sucrose. <i>Note that this product is shipped as lyophilized powder to China customers.</i>
Concentration:	lot specific
Conjugation:	Unconjugated
Storage:	Store at -20°C as received.
Stability:	Stable for 12 months from date of receipt.
Predicted Protein Size:	40 kDa
Gene Name:	DEAH-box helicase 30
Database Link:	NP_619519 Entrez Gene 22907 Human Q7L2E3



[View online »](#)

Background:

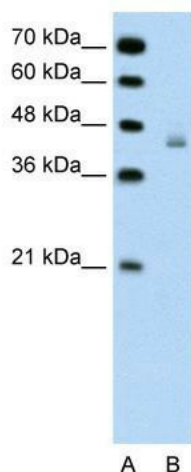
DEAD box proteins, characterized by the conserved motif Asp-Glu-Ala-Asp (DEAD), are putative RNA helicases. They are implicated in a number of cellular processes involving alteration of RNA secondary structure such as translation initiation, nuclear and mitochondrial splicing, and ribosome and spliceosome assembly. Based on their distribution patterns, some members of this DEAD box protein family are believed to be involved in embryogenesis, spermatogenesis, and cellular growth and division. The family member encoded by this gene is a mitochondrial nucleoid protein that associates with mitochondrial DNA. It has also been identified as a component of a transcriptional repressor complex that functions in retinal development, and it is required to optimize the function of the zinc-finger antiviral protein. Alternatively spliced transcript variants have been found for this gene. [provided by RefSeq, Feb 2013]

Synonyms:

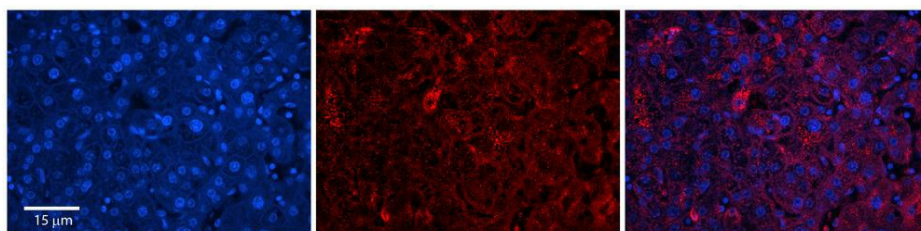
DDX30; DEAD; DEAH (Asp-Glu-Ala-His) box polypeptide 30; FLJ11214; H (Asp-Glu-Ala-Asp; His) box polypeptide 30; KIAA0890; Ret-CoR; retina co-repressor

Note:

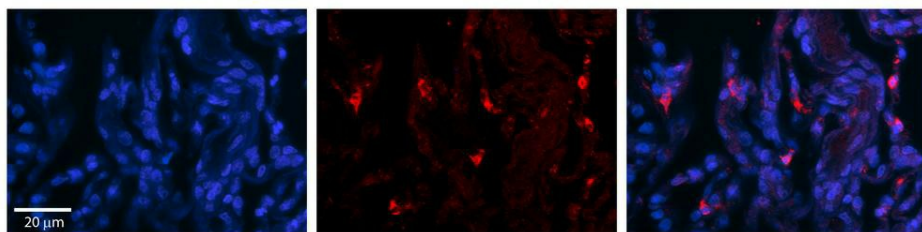
Immunogen Sequence Homology: Human: 100%; Dog: 93%; Pig: 93%; Mouse: 93%; Bovine: 93%; Rabbit: 93%

Product images:


WB Suggested Anti-DHX30 Antibody Titration: 0.2-1 ug/ml; Positive Control: Jurkat cell lysate
 DHX30 is strongly supported by BioGPS gene expression data to be expressed in Human Jurkat cells



Rabbit Anti-DHX30 Antibody; Formalin Fixed Paraffin Embedded Tissue: Human Adult Liver; Observed Staining: Cytoplasm in hepatocytes, moderate signal, wide tissue distribution; Primary Antibody Concentration: 1:100; Secondary Antibody: Donkey anti-Rabbit-



Rabbit Anti-DHX30 Antibody; Formalin Fixed Paraffin Embedded Tissue: Human Lung Tissue; Observed Staining: Cytoplasmic in alveolar type I cells; Primary Antibody Concentration: 1:100; Other Working Concentrations: 1/600; Secondary Antibody: Donkey anti-R