

## Product datasheet for TA341627

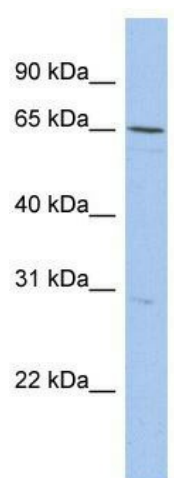
### DQX1 Rabbit Polyclonal Antibody

#### Product data:

Product Type:	Primary Antibodies
Applications:	WB
Recommended Dilution:	WB
Reactivity:	Human
Host:	Rabbit
Isotype:	IgG
Clonality:	Polyclonal
Immunogen:	The immunogen for anti-DQX1 antibody: synthetic peptide directed towards the N terminal of human DQX1. Synthetic peptide located within the following region: LRFCDWDRLLLQEVASTRGTGAWGVVLDEAQERSVASDSLQGLLDARLE
Formulation:	Liquid. Purified antibody supplied in 1x PBS buffer with 0.09% (w/v) sodium azide and 2% sucrose. <i>Note that this product is shipped as lyophilized powder to China customers.</i>
Concentration:	lot specific
Conjugation:	Unconjugated
Storage:	Store at -20°C as received.
Stability:	Stable for 12 months from date of receipt.
Predicted Protein Size:	66 kDa
Gene Name:	DEAQ-box RNA dependent ATPase 1
Database Link:	<a href="#">NP_598376</a> <a href="#">Entrez Gene 165545 Human</a> <a href="#">Q8TE96</a>
Background:	The specific function of this protein remains unknown.
Synonyms:	FLJ23757
Note:	Immunogen Sequence Homology: Human: 100%; Rabbit: 100%; Dog: 93%; Pig: 93%; Rat: 93%; Horse: 93%; Mouse: 93%; Bovine: 93%; Guinea pig: 93%; Zebrafish: 77%



[View online »](#)

**Product images:**

WB Suggested Anti-DQX1 Antibody Titration: 0.2-1 ug/ml; ELISA Titer: 1:312500; Positive Control: OVCAR-3 cell lysate